

# THEMIS Update



THEMIS





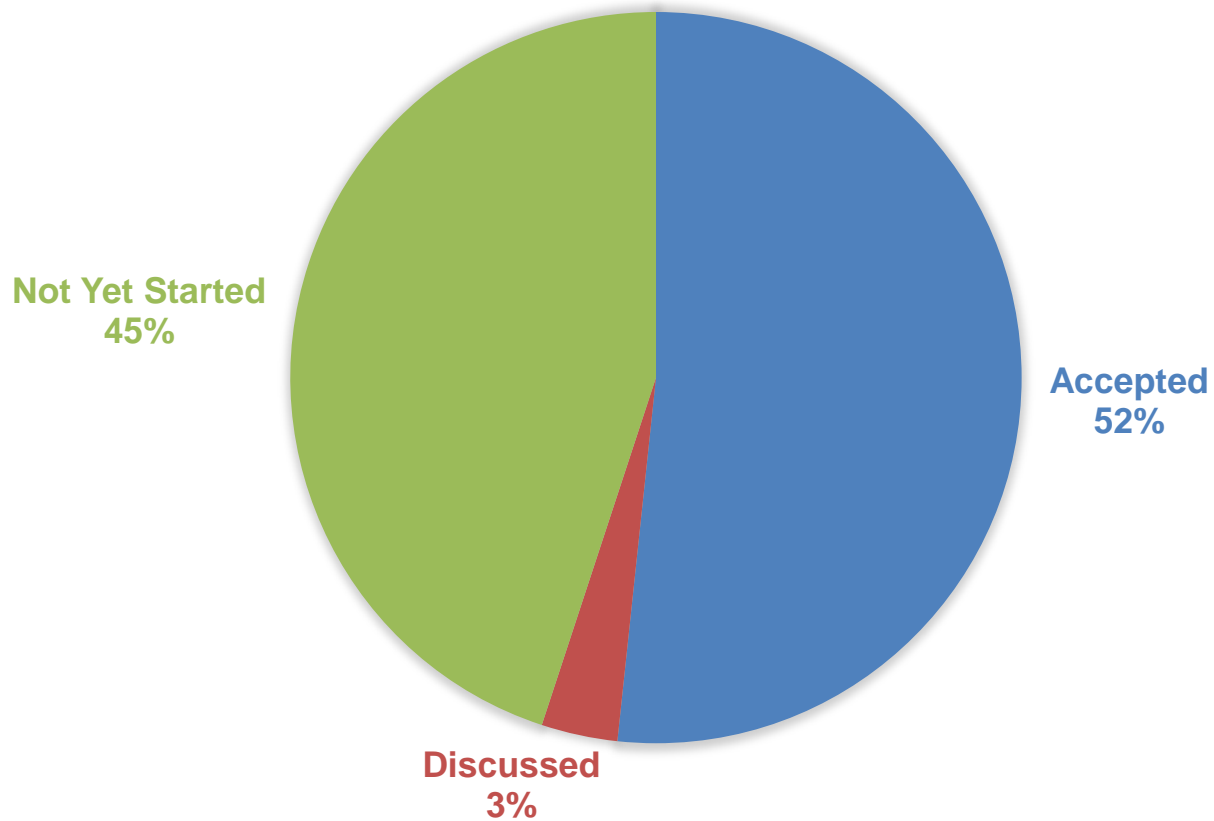
# Where were we?

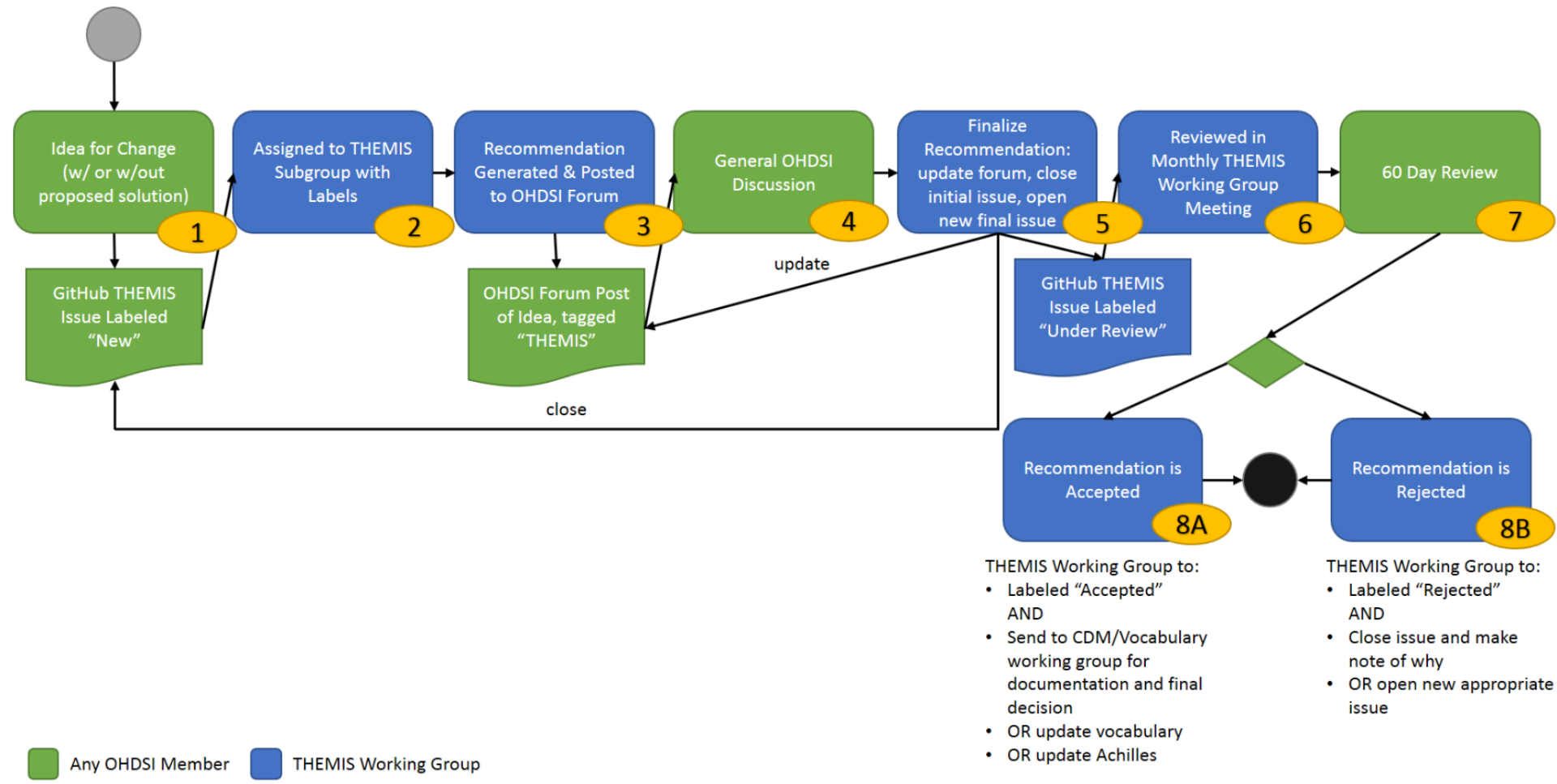
- F2F Kickoff – Symposium 2017
  - Created list of issues
- Regular Subgroup Meetings
  - Reviewed issues, discuss proposed solutions, created documentation
- F2F March 2018
  - Reviewed all completed issues and agreed/disagree to proposals as one group



# F2F March 2018 Results

## THEMIS ISSUES





<https://github.com/OHDSI/Themis>



# Forum Posts

- <http://forums.ohdsi.org/tags/c/cdm-builders/themis>
  - 60 days providing the community with use cases against the recommendation



# Github


- <https://github.com/OHDSI/Themis/issues>



MeghanPettine commented 15 hours ago

TYPE	NOTES
ITEM	Standardization of Measurements and Units
FORUM POST	<a href="http://forums.ohdsi.org/t/themis-subgroup-measurement-procedure/3675">http://forums.ohdsi.org/t/themis-subgroup-measurement-procedure/3675</a>
SOLUTION	Recommendation is to add unit to measurement relationship in the vocabulary. Next would be to add standard ranges.
NEXT STEPS	Working Group 1 is continuing with this study led by Vojtech Huser.



 ericaVoss added the **WG#1** label 2 hours ago



 ericaVoss added this to the **201803 F2F** milestone 2 hours ago



# Wiki Landing Page

- <http://www.ohdsi.org/web/wiki/doku.php?id=projects:workgroups:themis>
- Sub-working group defined
  - Meeting information updated
  - Meeting minutes
  - Issue list tracking



# Release 1

- All issues from THEMIS F2F March 2018
- Will be release 60 days from today if there are no use cases against the recommendation/solution





# Monthly THEMIS meeting

- A new monthly meeting to be initiated in June
- Purpose: To review all recommendation to determine next steps as a THEMIS group
  - Determine next release
  - Any other administrative items
- Date/Time: Doodle Pool to be sent out next week



# CDM WG versus THEMIS

- CDM WG – change to the CDM
  - If you know exactly what you want to change to the CDM, then take it to the CDM working group
- THEMIS
  - Making change to how we use the CDM
  - Standardize the use of the CDM or the ETL
  - Not too sure what to do, should it be a change or should it be a ETL implementation standard