

How RWE can inform the COVID-19 pandemic response:

**Lessons from OHDSI and EHDEN for global,
speedy and reliable drug safety research**

Dani Prieto-Alhambra, MD PhD
Prof of Pharmaco-epidemiology
Oxford University



AGENDA

- OHDSI and EHDEN
- Maximising reproducibility and speed through international collaboration
- “If it’s not good, I’ll tell you right, I’m not gonna get hurt by it”: the rise and fall of hydroxychloroquine



AGENDA

- OHDSI and EHDEN
- Maximising reproducibility and speed through international collaboration
- “If it’s not good, I’ll tell you right, I’m not gonna get hurt by it”: the rise and fall of hydroxychloroquine



OHDSI community

We're all in this journey together...



Different stakeholders: academia, medical product industry, regulators, government, payers, technology providers, health systems, clinicians, patients
Different disciplines: computer science, epidemiology, statistics, biomedical informatics, health policy, clinical sciences



OHDSI's community engagement

- Active community online discussion: forums.ohdsi.org
 - **>3,800** distinct users have made **>24,400** posts on **>4,200** topics
 - Implementers, Developers, Researchers, CDM Builders, Vocabulary users, OHDSI in Korea, OHDSI in China, OHDSI in Europe
- Weekly community web conferences for all collaborators to share their research ideas and progress
- **>25** workgroups for solving shared problems of interest
 - ex: Common Data Model, Population-level Estimation, Patient-level Prediction, Phenotype, NLP, GIS, Oncology, Women of OHDSI



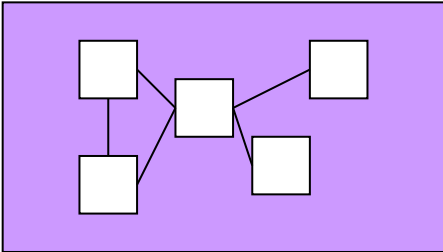
OHDSI's community engagement

- Quarterly tutorials in OHDSI tools and best practices, taught by OHDSI collaborators for OHDSI collaborators
- OHDSI Symposiums held annually in North America, Europe and Asia to provide the community opportunities to showcase research collaborations
(2020 Global Symposium virtual Oct 18-22)
- Follow us on Twitter @OHDSI and LinkedIn



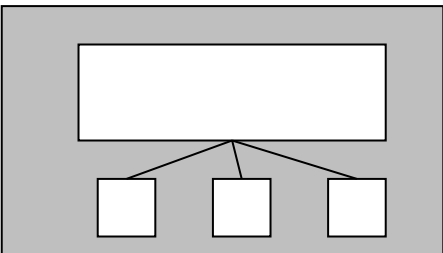
Common data model to enable standardized analytics

Source 1 raw data



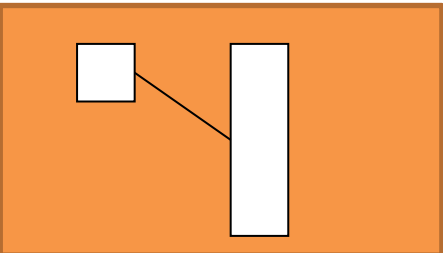
Electronic health records

Source 2 raw data

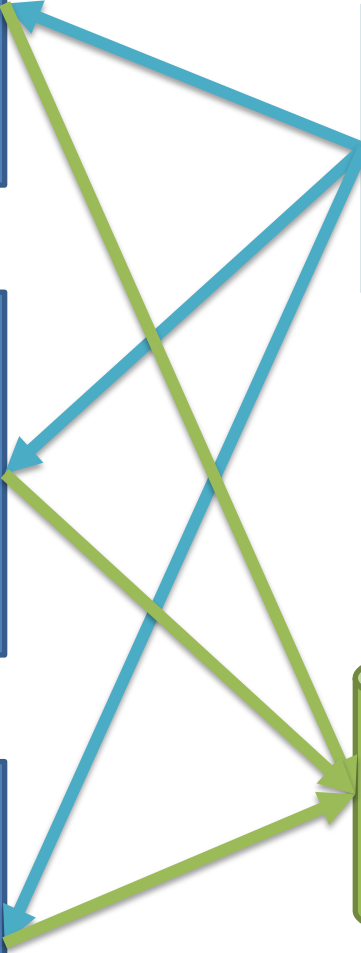
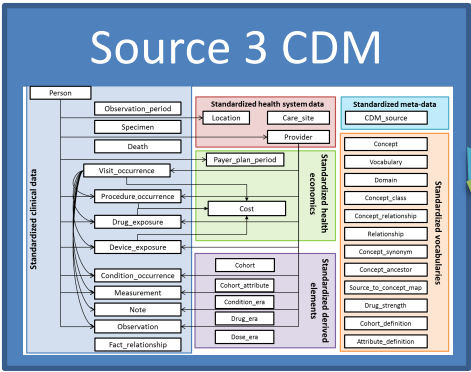
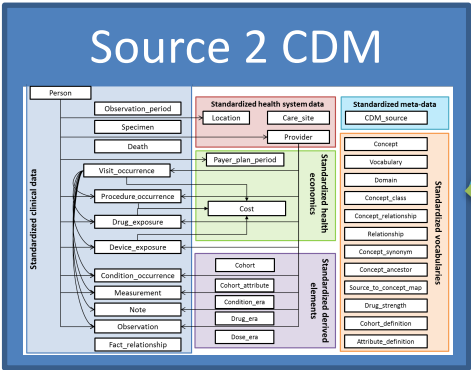
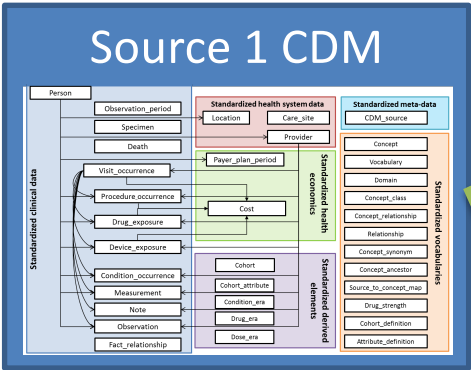
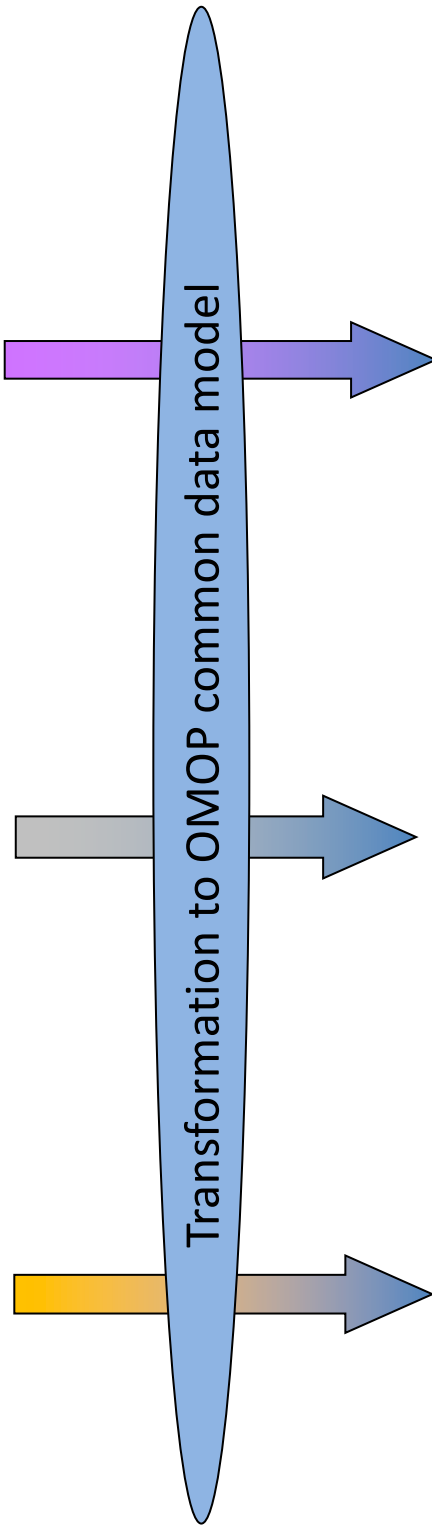


Administrative claims

Source 3 raw data

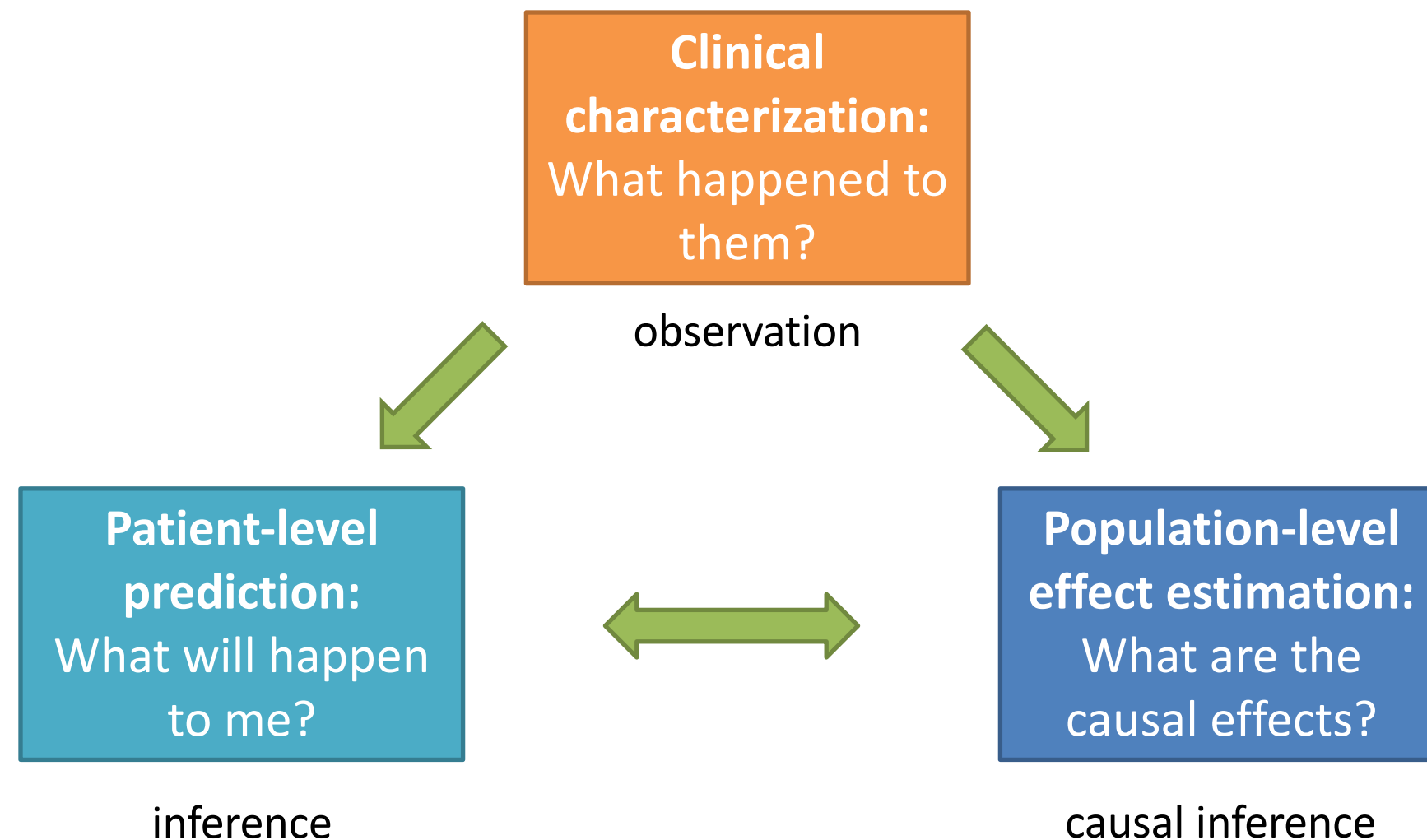


Clinical data





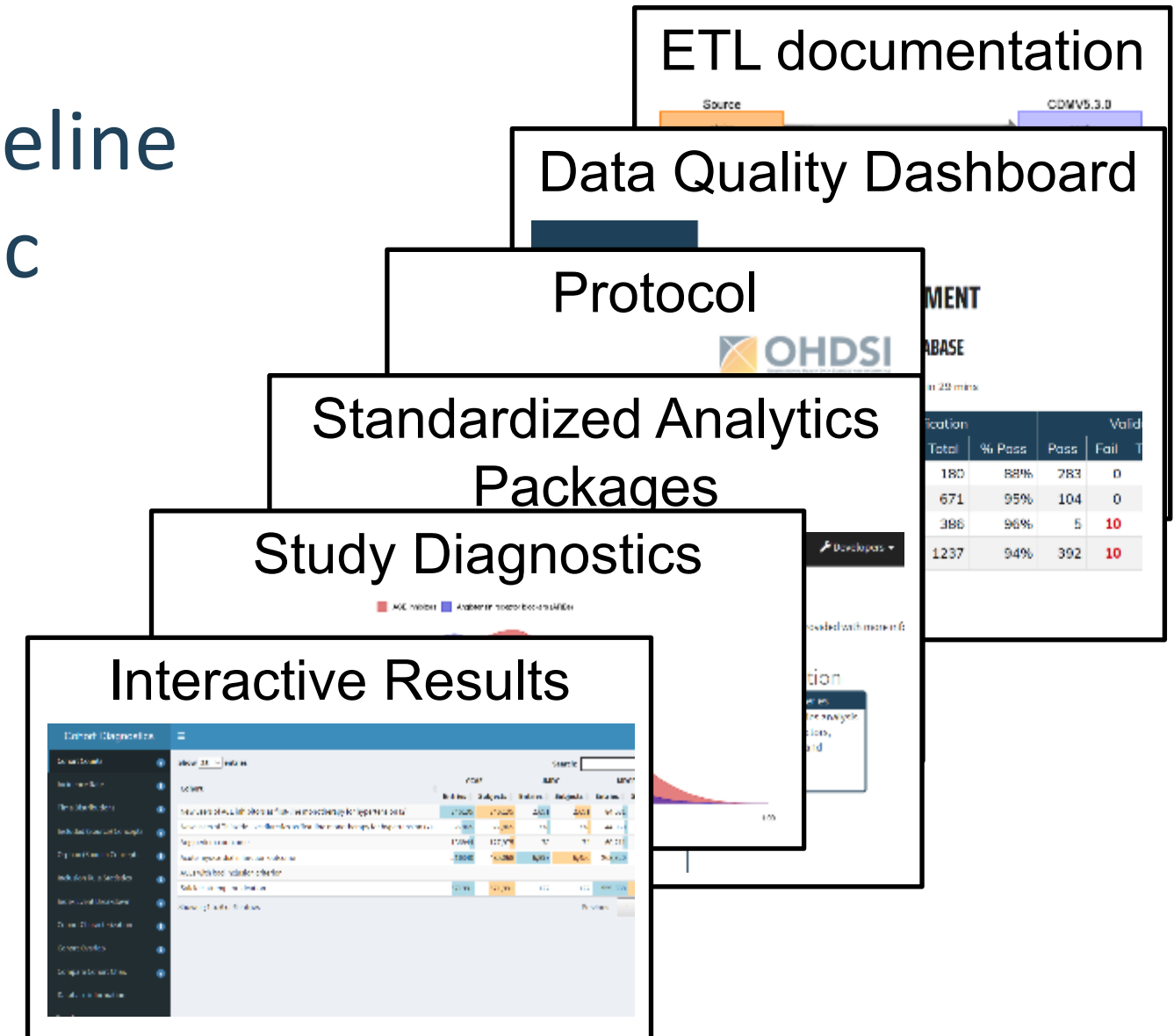
Complementary evidence to inform the patient journey





Driving agenda of full transparency

- All artifacts of our analytics pipeline are made available to the public
- In doing so, we are encouraging others to do the same
- Transparency is key to
 - **Reproducibility**
 - **Interpretability**
 - **Trustworthiness**

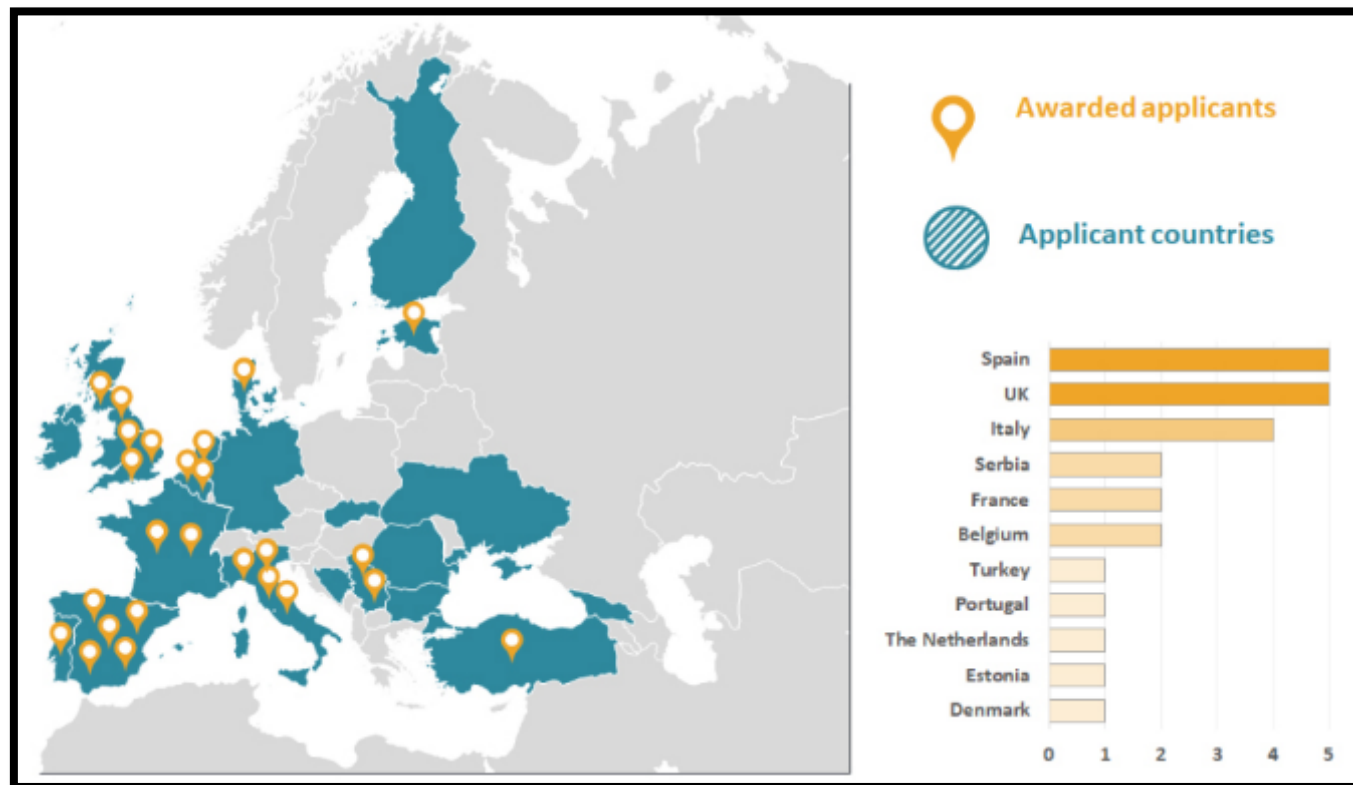


OHDSI COVID-19 Data Network



USA (8)	EUROPE (7)	ASIA-PACIFIC (3)
Premier (National – Hospital Billing)	CPRD (UK – Electronic Health Records)	HIRA (South Korea – Administrative Claims)
HealthVerity (Claims linked to diagnostic testing)	SIDIAP (Spain – Electronic Health Records)	DCMC (South Korea – Electronic Health Records)
Optum EHR (National – Electronic Health Records)	SIDIAP-H (Spain – EHR hospital linkage)	Nanfang Hospital (China – Electronic Medical Records)
IQVIA Open Claims (National – Administrative Claims)	HM Hospitales (Spain – Hospital Billing)	
Department of Veterans Affairs (National – Electronic Health Records)	ICPI (Netherlands – Electronic Health Records)	
Stanford University (CA – Electronic Health Records)	LPD France (France – Electronic Health Records)	<div>Together, OHDSI has studied:</div> <ul style="list-style-type: none">• >4.5m patients tested for SAR-COV-2• >1.2m patients diagnosed or tested positive for COVID-19• >249k patients hospitalized 4 COVID-19
Tufts University (MA – Electronic Health Records)	Germany DA (Germany – Electronic Health Records)	
Columbia University (NY – Electronic Health Records)		

- In April EHDEN launched a call to any institution in Europe holding relevant COVID-19 data to apply in order to contribute to research collaboration
- 75 applicants, **25 grants** awarded



- **Highlights:**

- **Health Data Hub** – medical records for the *entire French population*, millions of active patients, 70K COVID diagnoses made
- **UK Biobank** – *large longitudinal research study* of 500K participants from England, Scotland, and Wales, has 330 positive COVID19 cases
- **Istanbul University Faculty of Medicine** – 2.5M patients, 1.5M active patients, more than 7K COVID19 patients seen, *work done at this data partner would be applicable for the whole country*



AGENDA

- OHDSI and EHDEN
- Maximising reproducibility and speed through international collaboration
- “If it’s not good, I’ll tell you right, I’m not gonna get hurt by it”: the rise and fall of hydroxychloroquine



OHDSI
OBSERVATIONAL HEALTH DATA SCIENCES AND INFORMATICS

#OHDSICOVID19

OHDSI COVID-19 International Study-A-Thon

Follow our
COVID19 Updates

[www.ohdsi.org/
covid-19-updates](http://www.ohdsi.org/covid-19-updates)

 /OHDSI

 /company/ohdsi

#JoinTheJourney

**Collaborating to design and execute observational research and
generate real-world evidence to inform the global pandemic**

March 26-29, 2020



The original plan ...

OHDSI Europe 2020

- 300 to 350 people
- In Oxford
- Talking science
- Learning





Instead ... #flattenthecurve

Home Info Symposium 2020 Forum Github Past Events Photos Contact

EHDSI

 **OHDSI**
OBSERVATIONAL HEALTH DATA SCIENCES AND INFORMATICS

We regret to inform you that the 2020 European Symposium "From data to impact: the journey towards improving clinical practice" is cancelled due to the COVID-19 outbreak

[More Info](#)

[Login](#)



How can we help?

- System overload → Capacity issues ...
- What is the phenotype, prognosis, and care needs? [Characterisation]
- Who is at high (or low) risk of complications? [Prediction]





How can we help (2)?

- Clinical guidelines ...



中国疾病预防控制中心
CHINESE CENTER FOR DISEASE CONTROL AND PREVENTION

· 繁體 | En

首页 | 机构信息 | 健康主题 | 科学研究

首页 > 健康主题 > 传染病 > 乙类 > 新型冠状病毒肺炎 > 技术方案

关于印发新型冠状病毒肺炎诊疗方案（试行第七版）的通知


2020-03-05

各省、自治区、直辖市及新疆生产建设兵团卫生健康委、中医药管理局：

为进一步做好新型冠状病毒肺炎病例诊断和医疗救治工作，我们组织专家在对前期医疗救治工作进行分析、研判、总结的基础上，对诊疗方案进行修订，形成了《新型冠状病毒肺炎诊疗方案（试行第七版）》。现印发给你们，请参照执行。各有关医疗机构要在医疗救治工作中积极发挥中医药作用，加强中西医结合，完善中西医联合会诊制度，促进医疗救治取得良好效果。

附件：新型冠状病毒肺炎诊疗方案（试行第七版）

国家卫生健康委办公厅 国家中医药管理局办公室



Royal College
of Physicians

COVID-19
management guidelines

Compiled by Ali S M Jawad

23 March 2020



How can we help (3)?

- Drug (regulatory) approvals ...

China backs use of Roche's Actemra for coronavirus

Anti-inflammatory drug will be used in patients with lung complications



China has given a green light to use Roche's anti-inflammatory drug Actemra in coronavirus patients with lung complications as it tries to find ways to tackle the [COVID-19](#) outbreak.

Article by
[Phil Taylor](#)

5th March 2020

From: [Healthcare](#)

Share

Tweet

Like 951

32

Print Friendly

Tags

[Roche](#)
[Actemra](#)
[Coronavirus](#)
[COVID-19](#)

ADVERTISEMENT

Donald Trump says malaria drug has shown 'very encouraging results' in treating coronavirus

[View 3 comments](#)



Jimmy McCloskey Thursday 19 Mar 2020 3:47 pm



1.9k
SHARES





How can we help (5)?

Causal Effects / Estimation

- What is the safety of the most commonly used repurposed therapies?

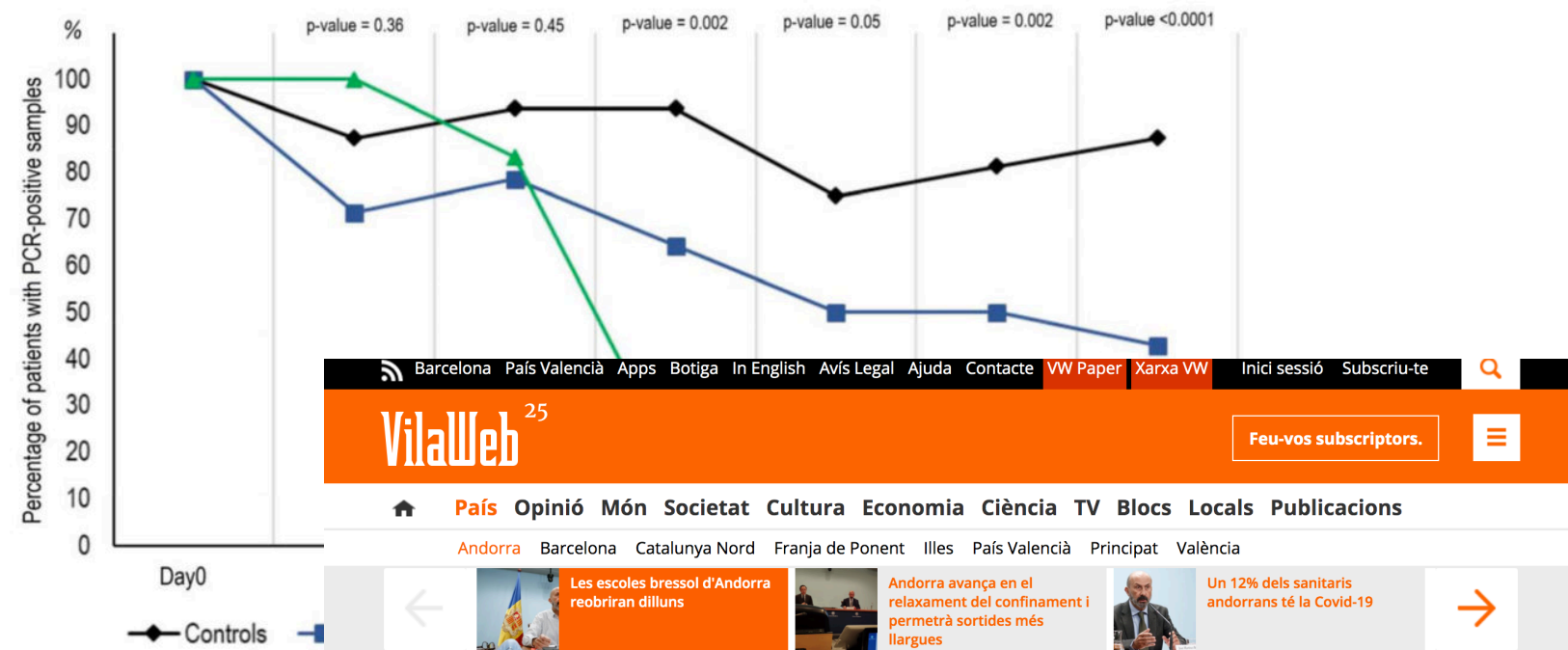


How can we help (4)?

- Extensive use of the combination of HCQ + AZM in countries hit in March ...

—70% **HCQ** / 32%
HCQ+AZM

Hydroxychloroquine and azithromycin as a treatment of COVID-19: results of an open-label non-randomized clinical trial [preprint]



PAÍS > ANDORRA

Andorra, primer estat a estendre el tractament amb hidroxiclороquina i azitromicina

Hi ha 564 pacients i el govern ha administrat hidroxiclороquina a 460





OHDSI

OBSERVATIONAL HEALTH DATA SCIENCES AND INFORMATICS

Who We Are ▾ Latest News Standards Software Tools Methods Book of OHDSI ▾ Research Resources ▾ Join the Journey

The Journey Newsletter ▾ Past Events Upcoming Events

[Home](#) > [COVID-19 Updates Page](#)

COVID-19 Updates Page

The Observational Health Data Sciences and Informatics (OHDSI) international community will host a COVID-19 virtual study-a-thon this week (March 26-29) to inform healthcare decision-making in response to the current global pandemic.

Day 4

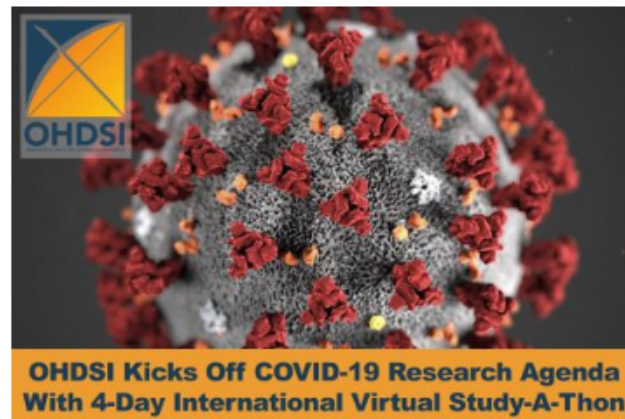
Early Call: [Video](#)

Global Call: [Video](#)

FINAL CALL: [Use This Link To Watch Live](#) (regardless of whether you registered)

Please take a look at the early calls, but we're going to save the exciting study-a-thon updates for our final call tonight! [This link will work for anybody](#), regardless of whether you registered for the study-a-thon. We are so excited to share our studies and early results with the world. Please share this link with people in your networks, so they can see the power of global collaboration in the OHDSI community.

Day 3 Updates



What have we done?

In only **88** hours, we did:

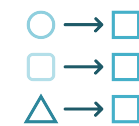
- Convene **351** participants from **30** countries
- Hold **12** Global Huddles, **>100** collaborator calls, **>13,000** chat messages
- Engage **15** concurrent channels
- Review **>10,000** publications
- Draft **9** study protocols
- Release **13** study packages
- Design **355** cohort definitions
- Assemble a distributed data network with **37** partners signed on to execute studies

<https://www.ohdsi.org/covid-19-updates/>



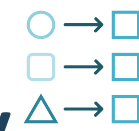
3 things that we did in 4 days that nobody had ever done before

- First large-scale characterization of COVID patients in Europe, US and Asia
- First prediction model externally validated on COVID patients to inform shielding strategies
- Largest study ever conducted on the safety of hydroxychloroquine



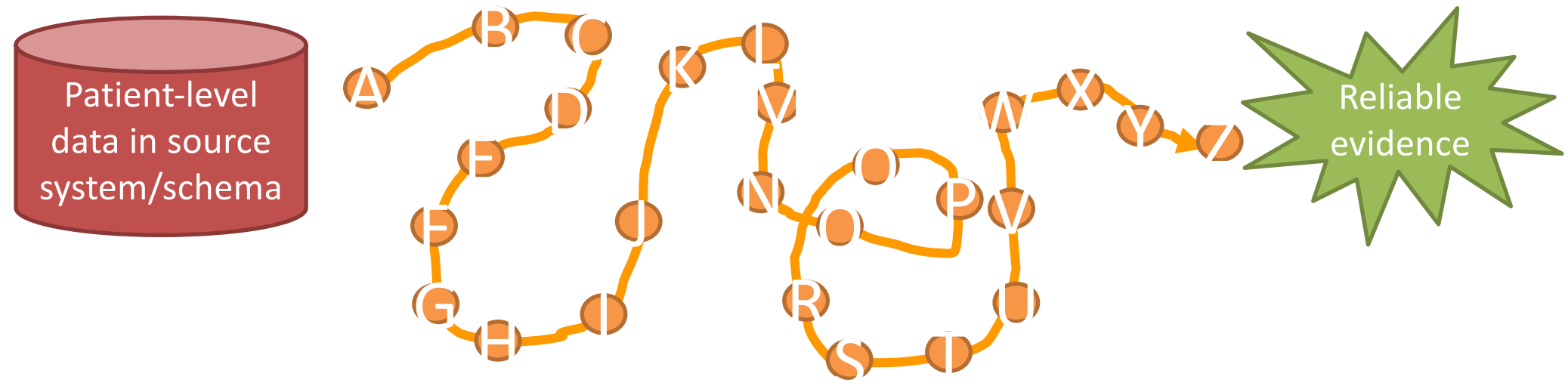
Desired attributes for reliable evidence

Desired attribute	Question	Researcher	Data	Analysis		Result
Repeatable	Identical	Identical	Identical	Identical	=	Identical
Reproducible	Identical	Different	Identical	Identical	=	Identical
Replicable	Identical	Same or different	Similar	Identical	=	Similar
Generalizable	Identical	Same or different	Different	Identical	=	Similar
Robust	Identical	Same or different	Same or different	Different	=	Similar

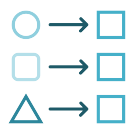


Minimum requirements to achieve reproducibility

Desired attribute	Question	Researcher	Data	Analysis	Result
Reproducible	Identical	Different	Identical	Identical	= Identical

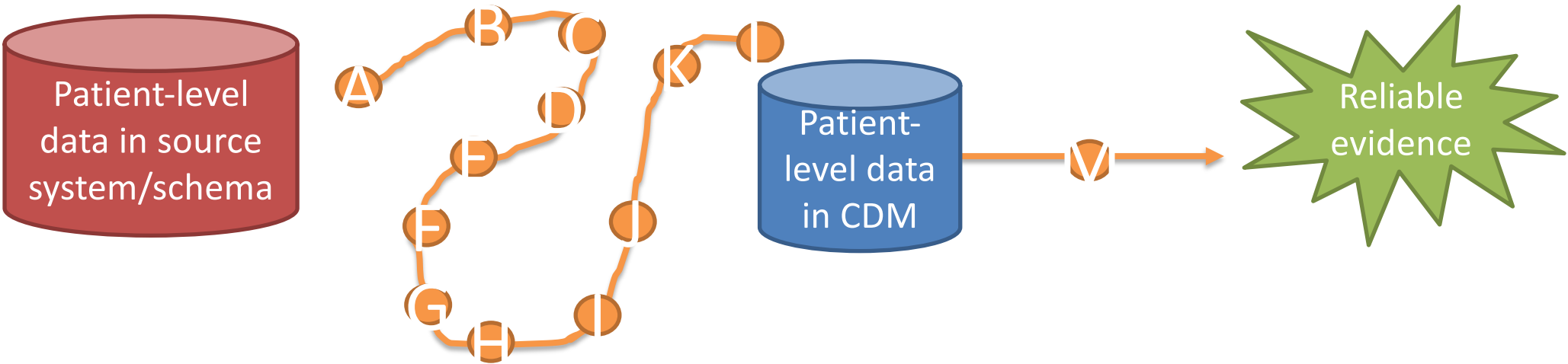


- Complete documented specification that fully describes all data manipulations and statistical procedures
- Original source data, no staged intermediaries
- Full analysis code that executes end-to-end (from source to results) without manual intervention



How a cdm + common analytics can support reproducibility

Desired attribute	Question	Researcher	Data	Analysis	Result
Reproducible	Identical	Different	Identical	Identical	= Identical



- CDM splits the journey into two segments: 1) data standardization, 2) analysis execution
- ETL specification and source code can be developed and evaluated separately from analysis design
- CDM creates opportunity for re-use of data step and analysis step

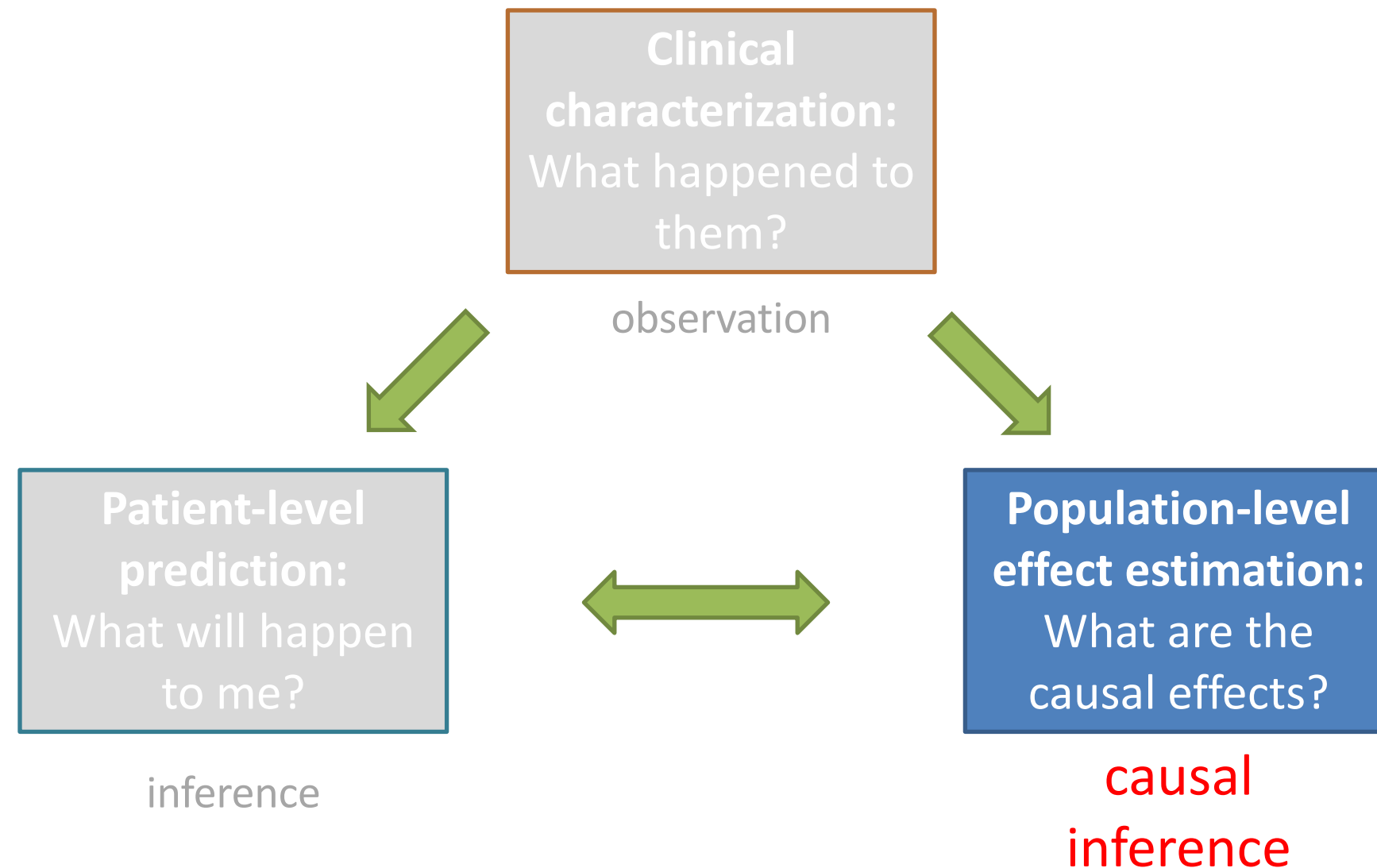


AGENDA

- OHDSI and EHDEN
- Maximising reproducibility and speed through international collaboration
- “If it’s not good, I’ll tell you right, I’m not gonna get hurt by it”: the rise and fall of hydroxychloroquine



Complementary evidence to inform the patient journey



~~Safety~~ Risks of HCQ ± AZM, in light of
rapid wide-spread use for COVID-19:

a multinational, network cohort and self-
controlled case series study





Primum non nocere (First, do no harm)

Hydroxychloroquine ...

- Cheap, generic drug
- Indicated for RA, SLE and malaria prophylaxis
- Relatively safe, but:
 - Retinal toxicity
 - QT lengthening
- “In vitro” activity vs SARSCov2
- Great publicity ...

Coronavirus: Trump says he is taking unproven drug hydroxychloroquine

🕒 19 May 2020

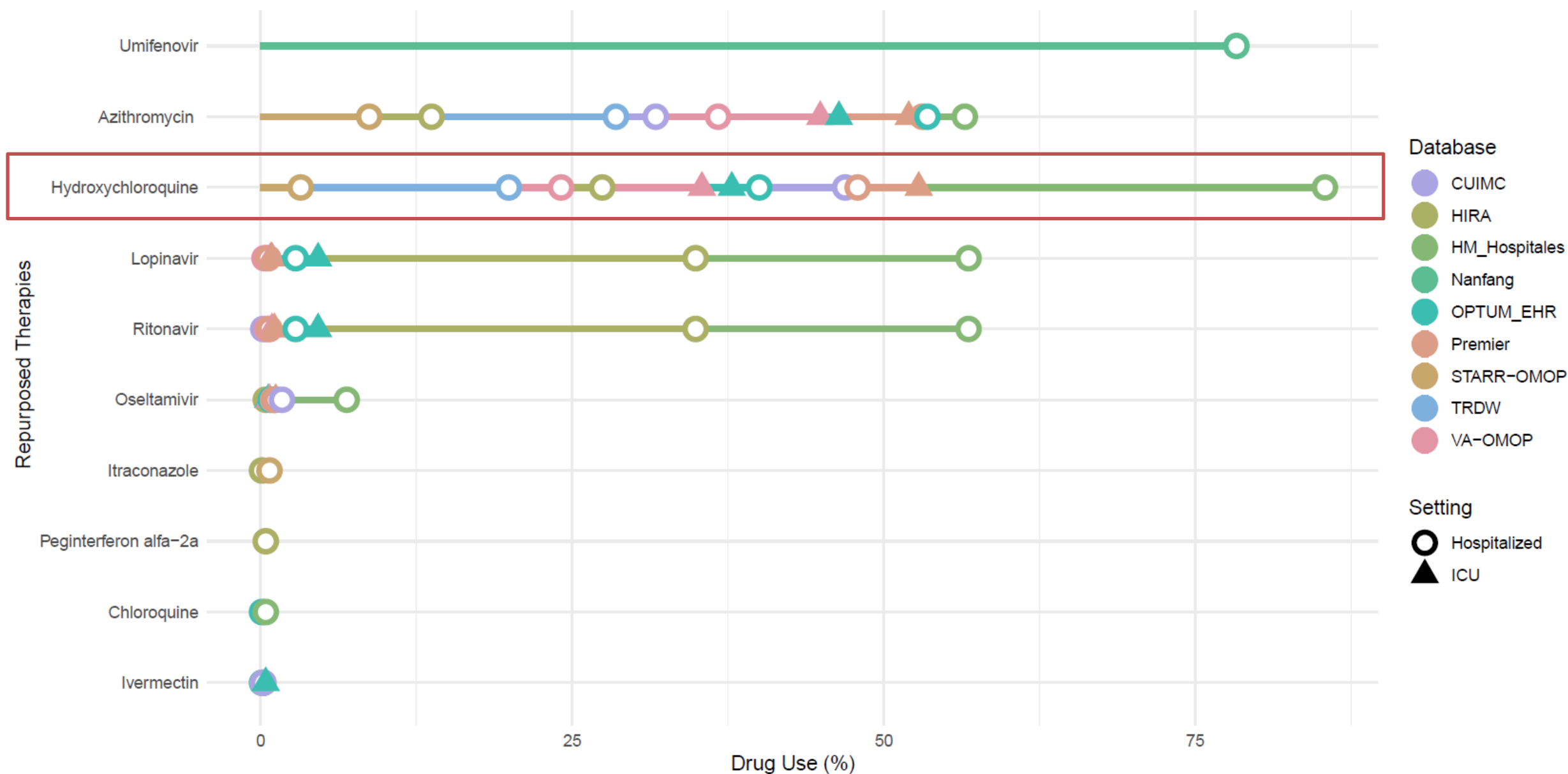
[f](#) [m](#) [t](#) [e](#) [Share](#)

Coronavirus pandemic





Potential public health impact: CHARYBDIS DUS results





Aim/s

We used historical data from >900,000 previous users of HCQ for other indications (RA) to learn:

- What is the risk of serious adverse events (leading to hospital admission) associated with HCQ (vs SSZ as active comparator)?
- What is the risk of serious adverse events associated with the addition of AZM (vs AMX as active comparator) amongst users of HCQ?



Methods

Data source/s: Routine data (electronic medical records and claims) from Germany, Japan, Spain, S Korea, US, and the UK

Design: Comparative cohort analysis (+ SCCS, not covered today)

Participants:

- Age 18+ , 1+ years of data 'visibility'
- Diagnosis of Rheumatoid Arthritis + use of one of the study drugs/ combinations



Methods (2)

Follow-up:

- 30-day (from initiation of study drug/combination)
- On treatment (for as long as treatment is continued)

Analyses:

1. Federated analytics -> db-specific findings -> meta-analysis
2. Building large-scale propensity scores
3. Diagnostics (imbalances observed confounders + negative control outcomes for unobserved confounders) -> analyses only conducted if OK
4. Propensity score stratification + NCO calibration



RESULTS

[http://evidence.ohdsi.org/Covid19Esti
mationHydroxychloroquine](http://evidence.ohdsi.org/Covid19EstimationHydroxychloroquine)

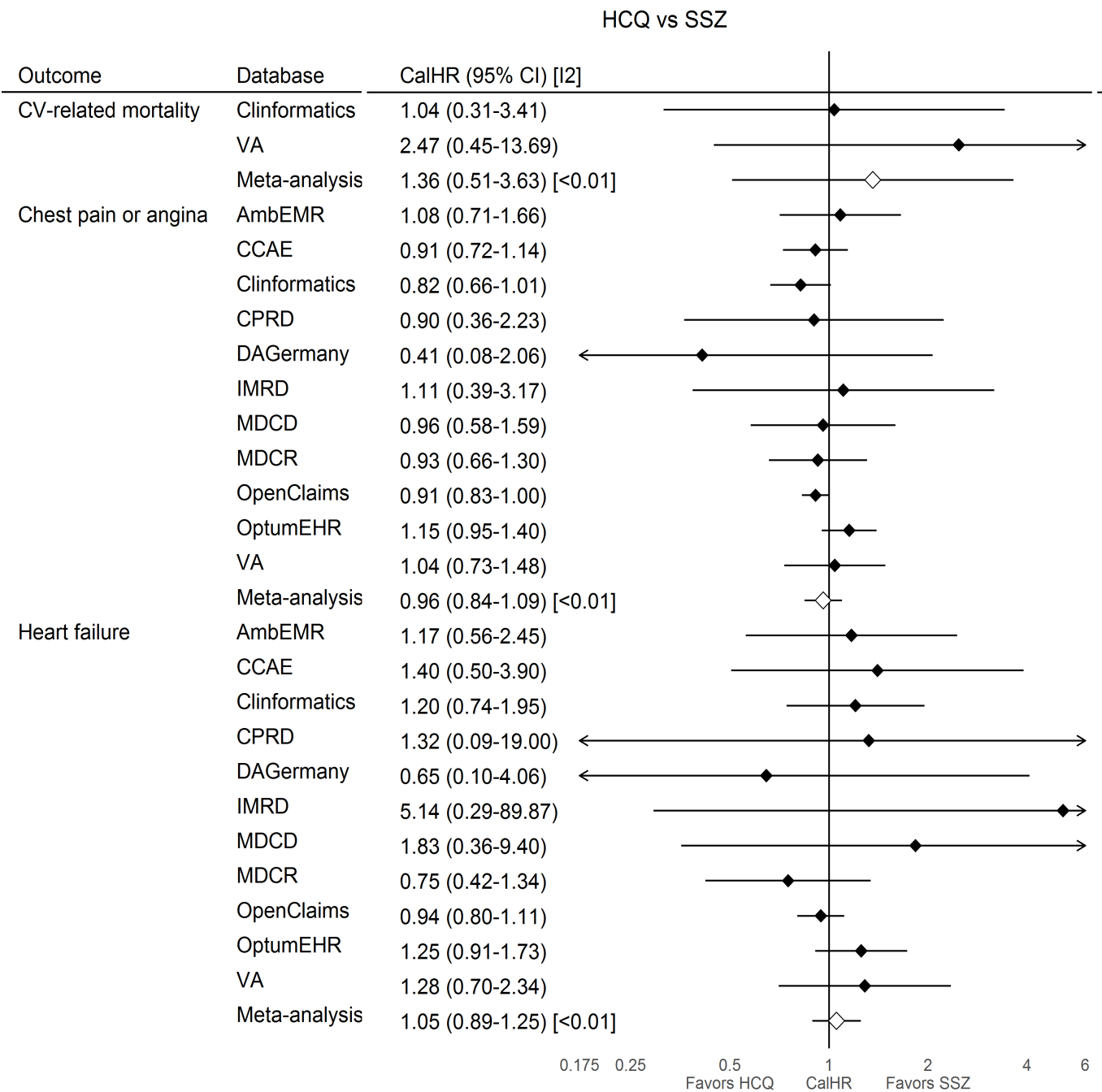


Patient counts

Data source	Hcq	SSZ
AmbEMR	57,140	15,268
CCAE	65,935	22,173
Clinformatics	50,698	17,221
CPRD	9,114	11,388
DAGermany	3,884	5,045
IMRD	8,843	8,452
MDCD	7,982	2,177
MDCR	15,690	5,150
OpenClaims	617,628	182,776
OptumEHR	76,844	21,549
VA	31,824	14,276
<i>Meta-analysis</i>	<i>945,582</i>	<i>305,475</i>

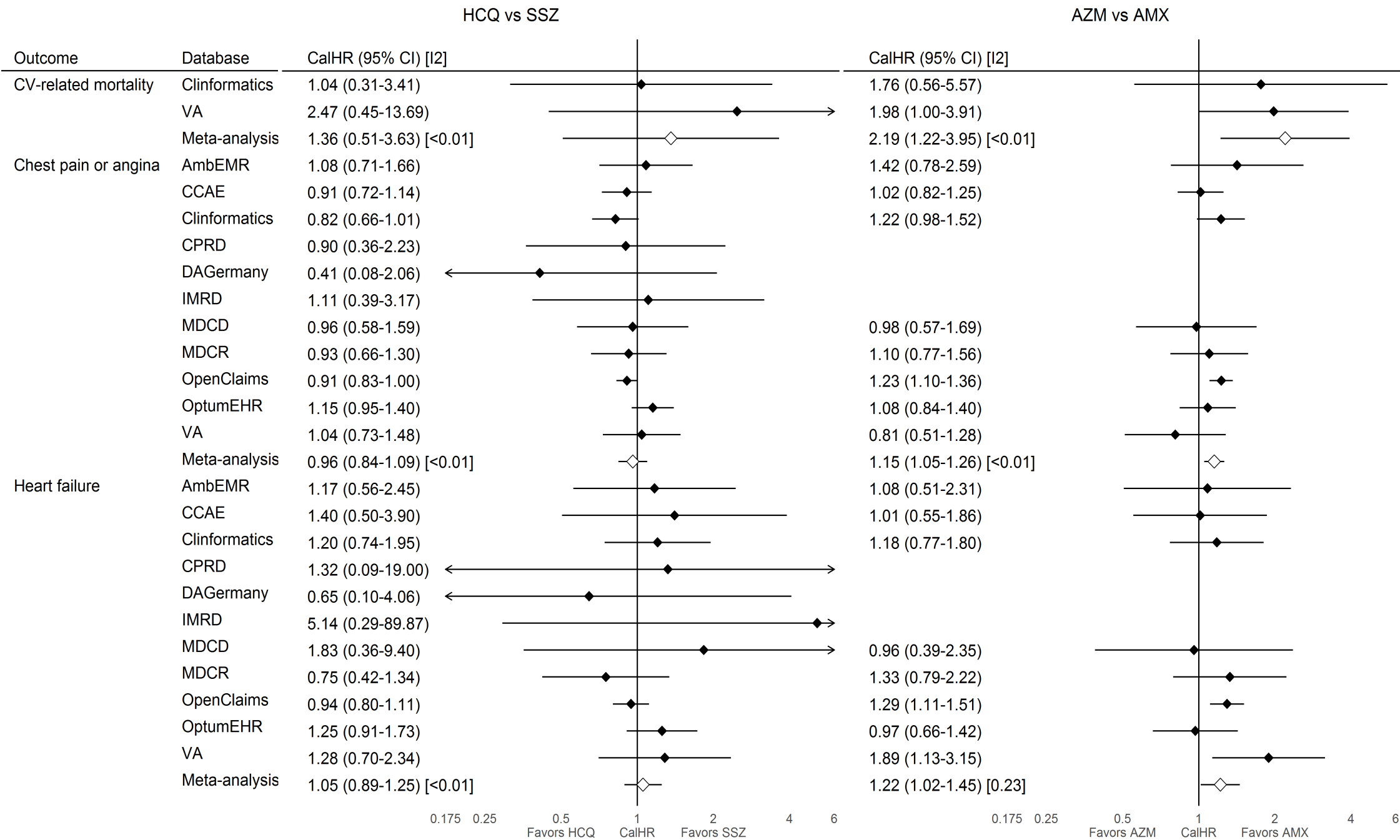


Short-term (30-day) main event/s safety



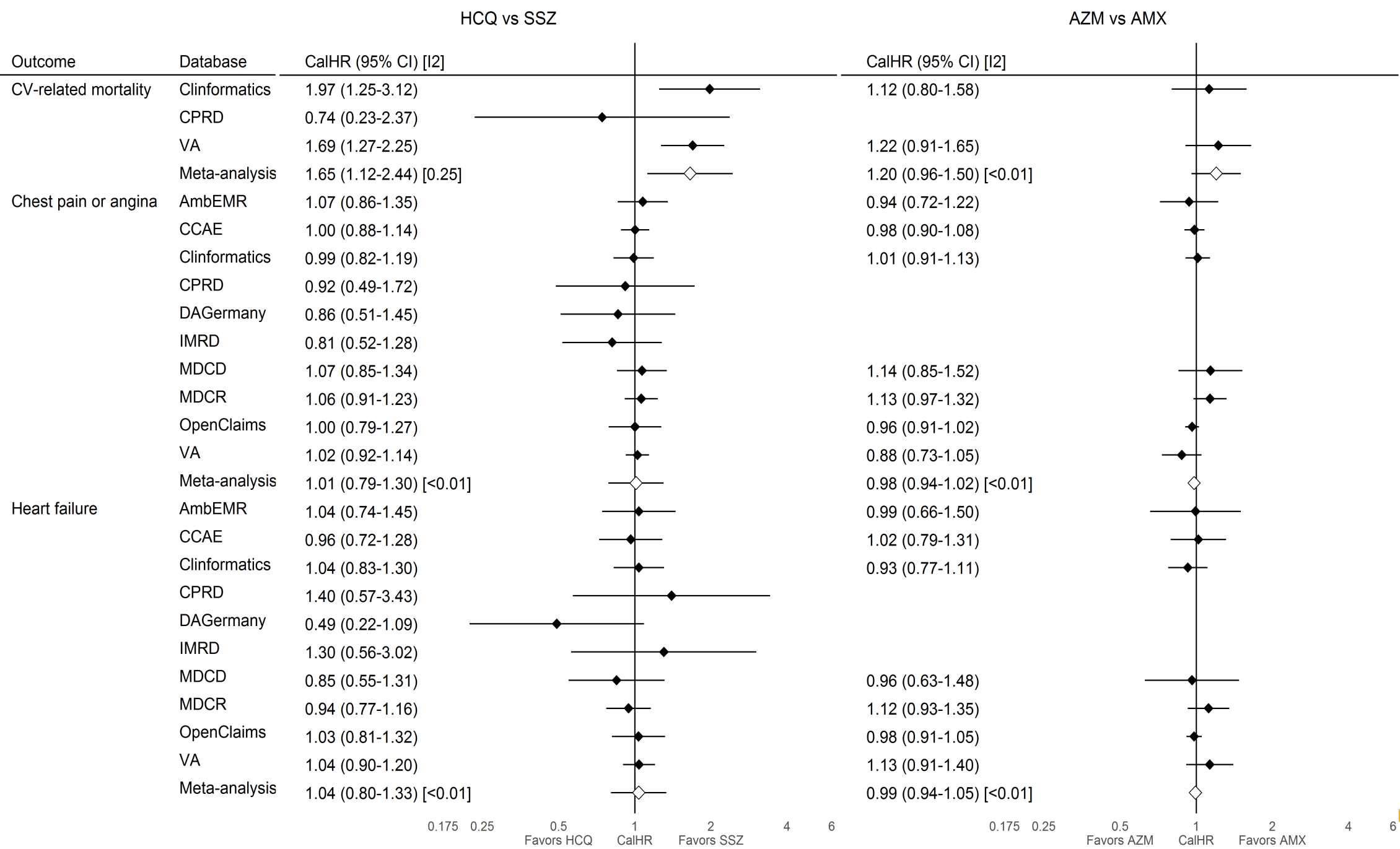


Short-term (30-day) main event/s



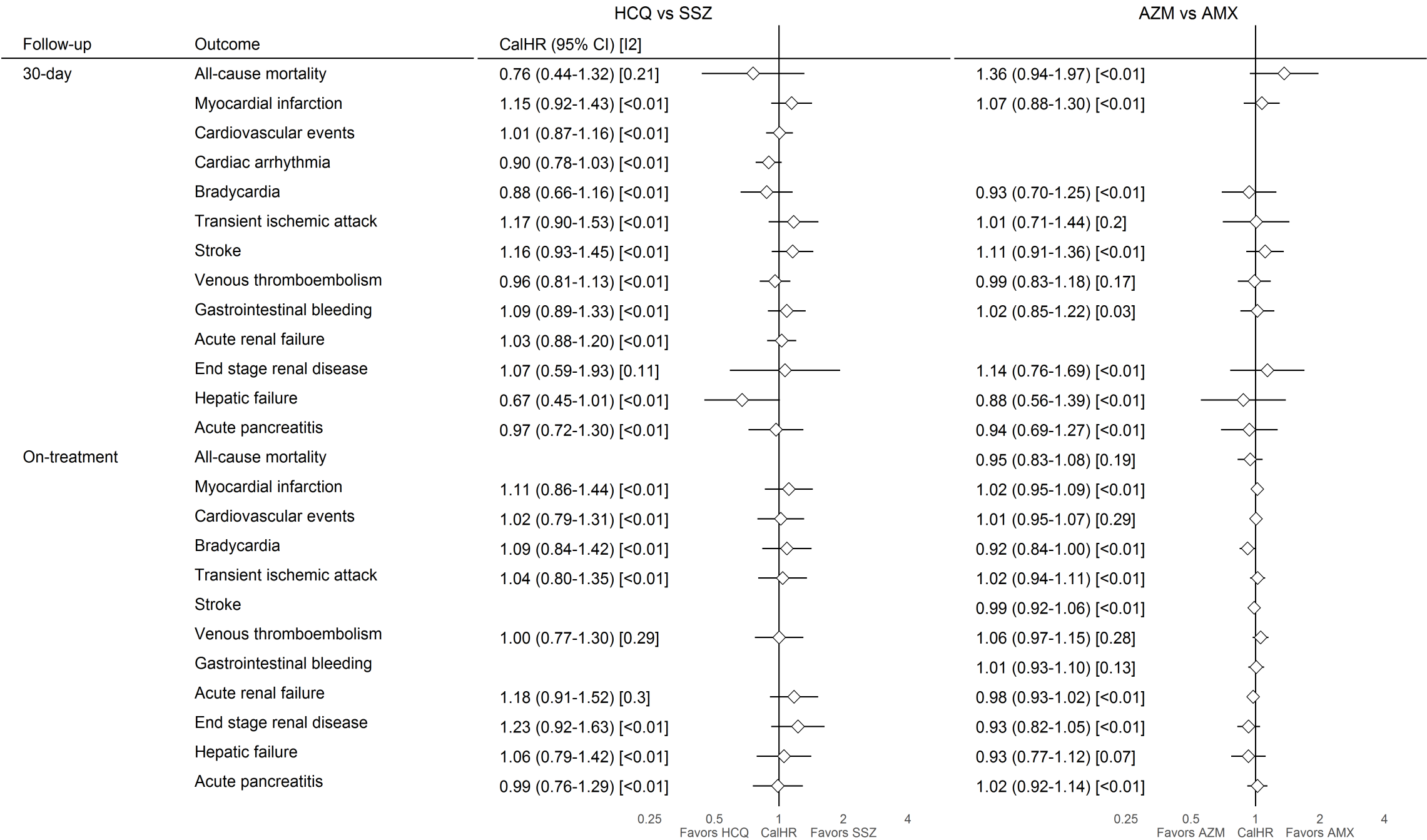


Long-term (on treatment) main event/s





SAE (others)





SUMMARY

Safety of hydroxychloroquine

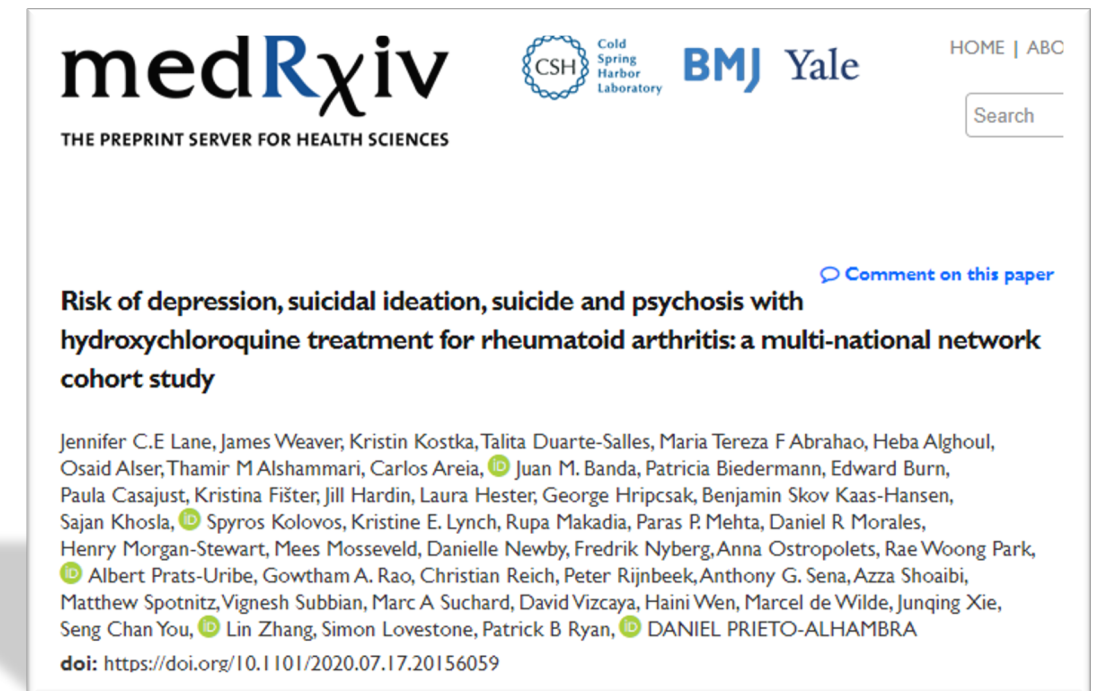
- Findings:
 - In history use in RA population, HCQ alone is generally safe but in combination with AZ it shows a doubling of risk of 30-day cardiovascular mortality.



- Psychiatric safety of hydroxychloroquine: EMA was concerned about risk of neuropsychiatric events associated with HCQ based on spontaneous reports.

Findings:

- No increased risk of depression, suicidal ideation or psychosis for new users of HCQ with RA.
- Utilized claims and electronic medical records from 10 databases across 3 different countries



Under review at *Rheumatology*



IMPACT



EUROPEAN MEDICINES AGENCY
SCIENCE MEDICINES HEALTH



European Network of Centres for
Pharmacoepidemiology and
Pharmacovigilance

EMA/95098/2010 Rev.8

The European Network of Centres for Pharmacoepidemiology and Pharmacovigilance (ENCePP) Guide on Methodological Standards in Pharmacoepidemiology (Revision 8)

Foreword to 8th Revision

ENCePP Guide supports strong observational research for the COVID-19 pandemic

The rapid progression of the COVID-19 pandemic has generated several hypotheses on the safety and effectiveness of therapeutic interventions, such as repurposed medicines. The need for quick answers triggered the initiation of observational studies carried-out with fast data collection, analysis and reporting. In a pandemic situation, the same methodological standards as those applied in any other circumstance should nevertheless be used to provide valid and reliable evidence supporting rapid treatment decisions by clinicians and regulators. Adherence to existing guidance on the appropriate design and conduct of pharmacoepidemiologic studies is therefore of utmost importance. ENCePP believes that this 8th Revision of the Guide on Methodological Standards in Pharmacoepidemiology should be the backdrop against which observational studies related to the COVID-19 pandemic should be conducted.



IMPACT



EUROPEAN MEDICINES AGENCY
SCIENCE MEDICINES HEALTH



European Network of Centres for
Pharmacoepidemiology and
Pharmacovigilance

EMA/95098/2010 Rev.8

The European Network of Centres for
Pharmacoepidemiology and Pharmacovigilance (ENCePP)
Guide on Methodological Standards in
Pharmacoepidemiology
(Revision 8)

In the context of a pandemic where rapid answers to research questions are needed, combining data across different databases affords insight into the generalisability of the results and may improve precision if outcomes or exposure of interest are rare or when there is interest in subgroup effects. It may also inform on specific patterns of drug utilisation. [Chapter 4.6.](#) on research networks for multi-database studies describes the different models that can be applied for combining data or results from multiple databases. An example of a collaboration in the context of the COVID-19 pandemic is the study published by [Lane et al.](#) using data from 14 multinational sources of claims data or electronic medical records. This study followed the model of a general common data model (CDM) described in [Chapter 4.6.2.5.](#)

Pg 6/123



IMPACT



EUROPEAN MEDICINES AGENCY
SCIENCE MEDICINES HEALTH



European Network of Centres for
Pharmacoepidemiology and
Pharmacovigilance

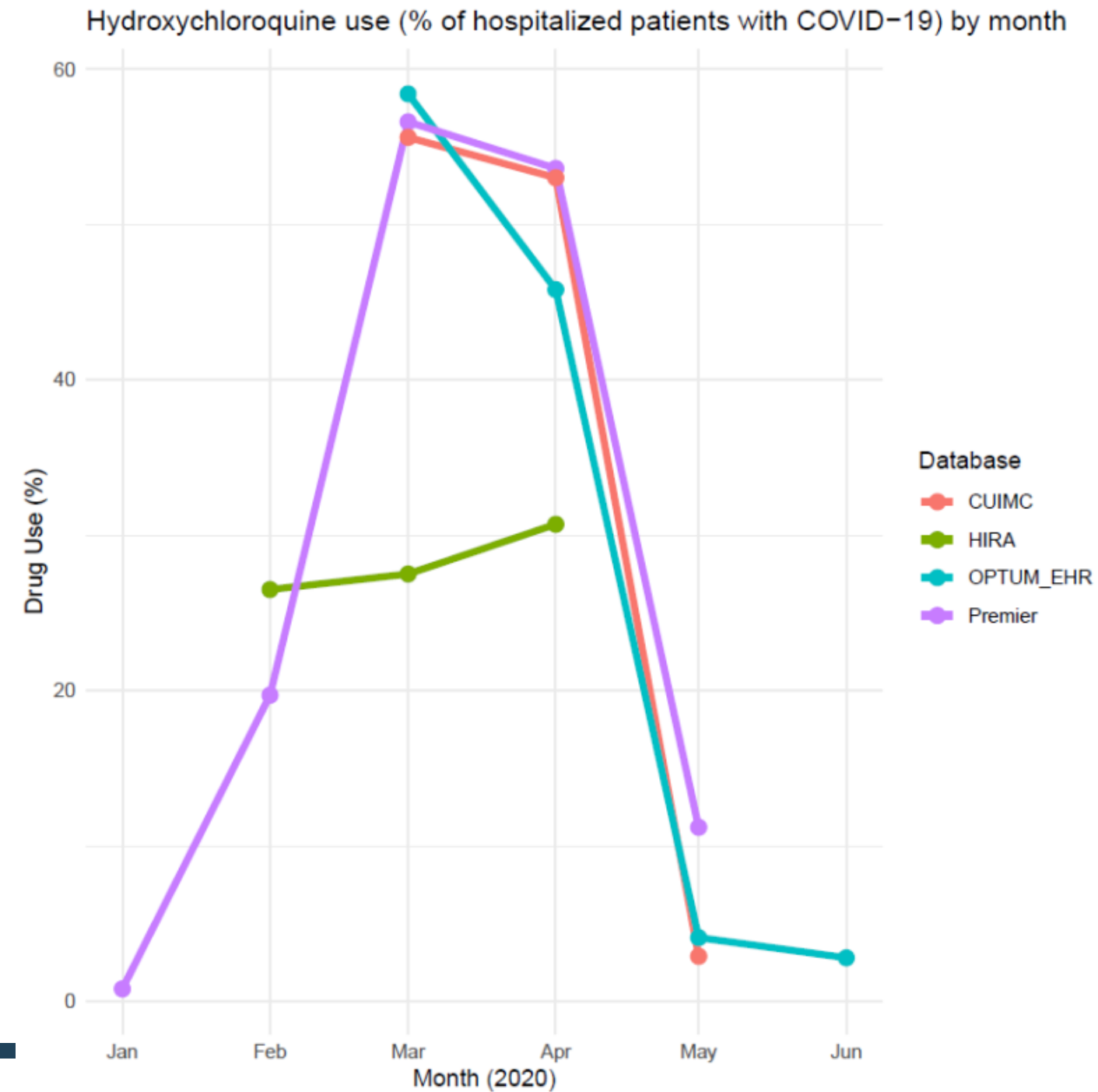
EMA/95098/2010 Rev.8

The European Network of Centres for
Pharmacoepidemiology and Pharmacovigilance (ENCePP)
Guide on Methodological Standards in
Pharmacoepidemiology
(Revision 8)

As stated by [Watson et al.](#) in relation to one of the published studies, lack of transparency and uncertainties about research standards applied raise doubts about published results. [Morales et al.](#) supported the reproducibility of their study by publishing the study protocol in the [EU PAS Register](#) ahead of time, providing [a start-to-finish executable code](#), facilitating the sharing and exploration of the complete result set with an [interactive web application](#) and asking clinicians and epidemiologists to perform a blinded evaluation of propensity score diagnostics for the treatment comparisons.



The rise and fall of hydroxychloroquine





Questions?