



Advances In Patient-Level Prediction

OHDSI Community Call
March 16, 2021 • 11 am ET



March/April OHDSI Community Calls

Date	Topic
March 16	Community Presentations (Theme: Advances in Patient-Level Prediction)
March 23	Focus Topic: OHDSI Work with FDA Best program
March 30	OHDSI Challenge
April 6	Open Network Studies
April 13	10-Minute Tutorials
April 20	Community Presentations (Theme: Local Impacts of OHDSI)
April 27	OHDSI Networking Session



March/April OHDSI Community Calls

Date	Topic
March 16	Community Presentations (Theme: Advances in Patient-Level Prediction)
March 23	Focus Topic: OHDSI Work with FDA Best program
March 30	OHDSI Challenge
April 6	Open Network Studies
April 13	10-Minute Tutorials
April 20	Community Presentations (Theme: Local Impacts of OHDSI)
April 27	OHDSI Networking Session




March/April OHDSI Community Calls

Date	Topic
March 16	Community Presentations (Theme: Advances in Patient-Level Prediction)
March 23	Focus Topic: OHDSI Work with FDA Best program
March 30	OHDSI Challenge
April 6	Open Network Studies
April 13	10-Minute Tutorials
April 20	Community Presentations (Theme: Local Impacts of OHDSI)
April 27	OHDSI Networking Session




OHDSI Challenge

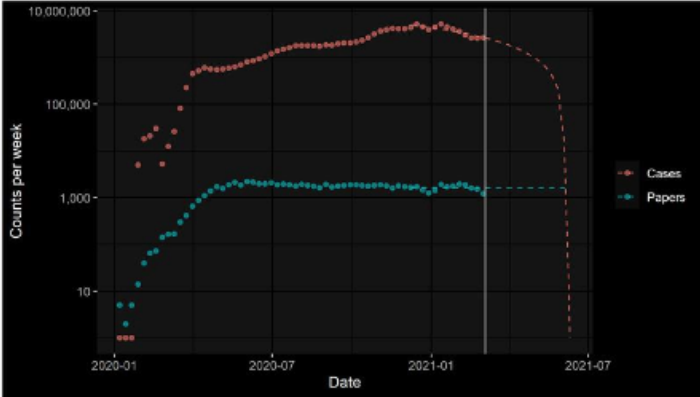


 **OHDSI Challenge March2021** Posts 2 more +

Org-wide 1892 Guests Meet

2 replies from Martijn Schuemie

 **Martijn Schuemie** 3/4 9:08 AM



The good news: fitting a linear model through the last 90 days of global COVID-19 case counts, and extrapolating that to the future suggests a drop to 0 before the summer! The bad news: The number of COVID-19 papers is predicted to grow for a long time, and the number of new COVID papers per week is predicted to exceed the number of new COVID cases soon.

Disclaimer: may contain some cherry-picking

Case data courtesy of the [COVID-19 Data Repository](#) by the Center for Systems Science and Engineering (CSSE) at Johns Hopkins University.

Publication data courtesy of [PubMed](#).

Code for generating the plot is [here](#).

Reply

March 6, 2021



OHDSI Challenge



OHDSI

General

OHDSI Challenge March2021

OHDSI coordinating center administration 

OHDSI Meme-a-thon

Teams Best Practices and Guidance

Technical support



OHDSI Challenge March2021

Posts Files Wiki +

Org-wide 1892 Guests



Craig Sachson 3/2 10:03 AM

OHDSI Challenge - March 2021 - COVID Visualizations

The OHDSI community has generated a large array of evidence throughout the pandemic, including characterization (CHARYBDIS), estimation (SCYLLA, hydroxychloroquine studies), and prediction (COVER). We have other efforts in the works, including EUMAEUS and AESIncidenceCharacterization. We also have plenty more work across community or locally. And that's on top of work that someone could do de novo using OHDSI standardized tools, like ATLAS and HADES.

Sometimes though, even with all that evidence, it can be hard to tell a story. So, if a picture is worth a thousand words, what one visualization using OHDSI tools/data/results tells the most compelling story that touches on the COVID pandemic?

The challenge: We are asking community collaborators to submit a static image (something that could be scaled to print 8.5x11, landscape or portrait) or link to an interactive visualization that stands on its own, and then accompany it with a 1-paragraph summary of why you think the image tells a compelling story.

This image could be something that's already sitting in one of our papers or out on data.ohdsi.org, which you could use as is, or perhaps you could augment it to help tell your story (if you do alter a graphic from another study, please add an attribution). Perhaps it could be a new graphic that you produce based on available results, or even something produced based on new analysis.

Whatever the graphic is, we want to know why it's meaningful to you — and perhaps why it should be meaningful to all of us.

All submissions should be posted in the OHDSI team in the channel 'OHDSI Challenge - March 2021' by Thursday, March 25, at 8 pm ET. On the March 30 community call, we will review the visualization gallery and recognize the contributions.

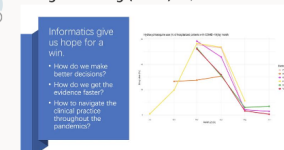
[See less](#)

2 replies



Mengchun Gong (Guest) 3/3 5:10 AM

1





Three Stages of The Journey

Where Have We Been?

Where Are We Now?

Where Are We Going?

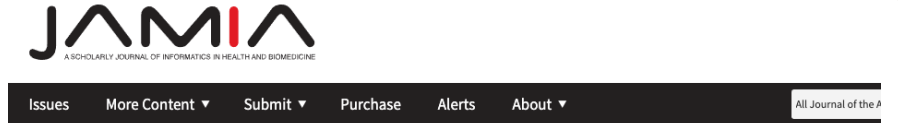




OHDSI Shoutouts!



Congratulations to **Alison Callahan, Vladimir Polony, José Posada, Juan Banda, Saurabh Gombar, and Nigam Shah** on this study published in JAMIA: **ACE: the Advanced Cohort Engine for searching longitudinal patient records.**



Article Contents

- Abstract
- INTRODUCTION
- OBJECTIVE
- MATERIALS AND METHODS
- RESULTS
- DISCUSSION
- CONCLUSION
- FUNDING
- AUTHOR CONTRIBUTIONS
- SUPPLEMENTARY MATERIAL
- DATA AVAILABILITY
- CONFLICT OF INTEREST STATEMENT
- REFERENCES
- Author notes
- Supplementary data

ACE: the Advanced Cohort Engine for searching longitudinal patient records

Alison Callahan ✉, Vladimir Polony, José D Posada, Juan M Banda, Saurabh Gombar, Nigam H Shah [Author Notes](#)

Journal of the American Medical Informatics Association, ocab027,
<https://doi.org/10.1093/jamia/ocab027>

Published: 13 March 2021 [Article history](#)

[PDF](#) [Split View](#) [Cite](#) [Permissions](#) [Share](#)

Abstract

Objective

To propose a paradigm for a scalable time-aware clinical data search, and to describe the design, implementation and use of a search engine realizing this paradigm.

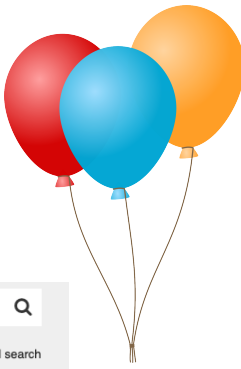
Materials and Methods

The Advanced Cohort Engine (ACE) uses a temporal query language and in-memory datastore of patient objects to provide a fast, scalable, and expressive time-aware search. ACE accepts data in the Observational Medicine Outcomes Partnership Common Data Model, and is configurable to balance performance with compute cost. ACE's temporal query language supports automatic query expansion using clinical knowledge graphs. The ACE API can be used with R, Python, Java, HTTP, and a Web UI.





OHDSI Shoutouts!



Congratulations to **Jungchan Park, Seung-Hwa Lee, Seng Chan You, Jinseob Kim, Kwangmo Yang** on this study published in PLOS ONE: **Effect of renin-angiotensin-aldosterone system inhibitors on Covid-19 patients in Korea.**

The screenshot shows the PLOS ONE article page. At the top, there are navigation links: PUBLISH, ABOUT, BROWSE, and a search bar. The article title is "Effect of renin-angiotensin-aldosterone system inhibitors on Covid-19 patients in Korea". Below the title, the authors are listed: Jungchan Park, Seung-Hwa Lee, Seng Chan You, Jinseob Kim, and Kwangmo Yang. The article is published on March 11, 2021. On the right side, there are statistics: 0 Save, 0 Citation, 112 View, and 1 Share. Below these are buttons for Download PDF, Print, and Share. There is also a "Check for updates" button. The article is included in the "COVID-19 pandemic (2019-21)" collection. The abstract section is visible, starting with "Background: The effect of renin-angiotensin-aldosterone system (RAAS) inhibitors in coronavirus disease 19 (Covid-19) patients has not been fully investigated. We evaluated the association between RAAS inhibitor use and outcomes of Covid-19." The methods section follows, describing a retrospective observational cohort study. The results section mentions that from a total of 7,590 patients diagnosed with Covid-19, two distinct cohorts were generated based on RAAS inhibitors prescribed within 6 months before Covid-19 diagnosis.





OHDSI Shoutouts!



Our new OHDSI APAC web page (ohdsi.org/apac) is now live and will host the recordings of previous OHDSI APAC calls, as well as more information from the regional chapters.

OHDSI APAC - Our Asia-Pacific Community

OHDSI is a global, multi-stakeholder, interdisciplinary and open-science network that collaborates to bring out the value of health data through large-scale analytics. Our Asia-Pacific (APAC) community comprises six regional chapters (Australia, China, Japan, Singapore, South Korea, Taiwan) and has led important OHDSI initiatives around the world.

The [first OHDSI APAC Symposium](#) was held virtually Dec. 5-6, 2020, and it provided an opportunity for our Asia-Pacific collaborators (along with others around the world) to share research, provide community updates, collaborate in regional breakouts or network discussions, and have some OHDSI fun.

Upcoming APAC Community Calls	
Date	Topic
March 25	Network Research
April 8	OHDSI Projects
April 22	Regional Updates
May 6	15-Minute Tutorials
May 20	Collaborator Showcase Presentations
June 3	Network Research
June 17	Welcome To OHDSI
July 1	OHDSI Projects

The APAC community has its own group in the OHDSI MS Teams environment to promote greater collaboration on our collaborative efforts. It will also be the home of our bi-weekly APAC Community Calls, where we will provide updates, share research presentations, collaborate on topics of shared interest, and plenty more. How can you get involved? First, [request access to our MS Teams Environment](#), then request access to [our OHDSI APAC workgroup](#). You can also join the meetings [by using this direct link](#).

Our calls, which are scheduled on a bi-weekly basis, take place Thursday at 10 am CST/SGT, 11 am KST/JST, 12:30 pm ACDT, as well as Wednesday at 10 pm EST and 7 pm PST.

All calls are recorded, so if you miss one or want to share with a collaborator, check out the call recordings below.

+ Mar. 11, 2021 - Collaborator Showcase (Presentations by Ty Stanford and Jason Hsu)

— Feb. 25, 2021 - Welcome To The Journey (Helping Our OHDSI Newcomers Get Started)

Theme: Welcome To OHDSI

Meeting contents included:

- Patrick Ryan and Mui Van Zandt introduce the OHDSI community and OHDSI APAC
- OHDSI experience sharing from 3 APAC collaborators
- Q&A from the audience

Recording



OHDSI Shoutouts!





OHDSI

OBSERVATIONAL HEALTH DATA SCIENCES AND INFORMATICS

Who We Are ▾

OHDSI Updates & News ▾

Standards

Software Tools

OHDSI Studies

Book of OHDSI ▾

Resources ▾

New To OHDSI? ▾

EHDEN Academy ▾

This Week In OHDSI ▾

Events & Collaborations ▾

Collaborate with OHDSI in MStTeams ▾

Social Media/Newsletter ▾

OHDSI Community Calls

OHDSI APAC Community Calls

Upcoming Working Group Calls

Our Asia-Pacific Community

OHDSI is a global, multi-stakeholder, interdisciplinary and open-science network that collaborates to bring out the value of health data through large-scale analytics. Our Asia-Pacific (APAC) community comprises six regional chapters (Australia, China, Japan, Singapore, South Korea, Taiwan) and has led important OHDSI initiatives around the world.

The [first OHDSI APAC Symposium](#) was held virtually Dec. 5-6, 2020, and it provided an opportunity for our Asia-Pacific collaborators (along with others around the world) to share research, provide community updates, collaborate in regional breakouts or network discussions, and have some OHDSI fun.



Upcoming APAC Community Calls

Date	Topic
March 25	Network Research
April 8	OMOP Projects
April 22	Regional Updates
May 6	10-Minute Tutorials
May 20	Collaborator Showcase Presentations
June 3	Network Research
June 17	Welcome To OHDSI
July 1	OMOP Projects

@OHDSI

www.ohdsi.org

#JoinTheJourney

linkedin.com/company/ohdsi

OHDSI APAC - Our Asia-Pacific Community

OHDSI is a global, multi-stakeholder, interdisciplinary and open-science network that collaborates to bring out the value of health data through large-scale analytics. Our Asia-Pacific (APAC) community comprises six regional chapters (Australia, China, Japan, Singapore, South Korea, Taiwan) and has led important OHDSI initiatives around the world.

The [first OHDSI APAC Symposium](#) was held virtually Dec. 5-6, 2020, and it provided an opportunity for our Asia-Pacific collaborators (along with others around the world) to share research, provide community updates, collaborate in regional breakouts or network discussions, and have some OHDSI fun.

The APAC community has its own group in the OHDSI MS Teams environment to promote greater collaboration on our collaborative efforts. It will also be the home of our bi-weekly APAC Community Calls, where we will provide updates, share research presentations, collaborate on topics of shared interest, and plenty more. How can you get involved? First, [request access to our MS Teams Environment](#), then request access to [our OHDSI APAC workgroup](#). You can also join the meetings [by using this direct link](#).

Our calls, which are scheduled on a bi-weekly basis, take place Thursday at 10 am CST/SGT, 11 am KST/JST, 12:30 pm ACDT, as well as Wednesday at 10 pm EST and 7 pm PST.

All calls are recorded, so if you miss one or want to share with a collaborator, check out the call recordings below.

Upcoming APAC Community Calls	
Date	Topic
March 25	Network Research
April 8	OMOP Projects
April 22	Regional Updates
May 6	10-Minute Tutorials
May 20	Collaborator Showcase Presentations
June 3	Network Research
June 17	Welcome To OHDSI
July 1	OMOP Projects

+ Mar. 11, 2021 - Collaborator Showcase (Presentations by Ty Stanford and Jason Hsu)

— Feb. 25, 2021 - Welcome To The Journey (Helping Our OHDSI Newcomers Get Started)

Theme: Welcome To OHDSI

Meeting contents included:

- Patrick Ryan and Mui Van Zandt introduce the OHDSI community and OHDSI APAC
- OHDSI experience sharing from 3 APAC collaborators
- Q&A from the audience

Recording





OHDSI Shoutouts!



Who We Are ▾

OHDSI Updates & News ▾

Standards

Software Tools

OHDSI Studies

Book of OHDSI ▾

Resources ▾

New To OHDSI? ▾

EHDEN Academy ▾

This Week In OHDSI ▾

Events & Collaborations ▾

Collaborate with OHDSI in MSTeams ▾

Social Media/Newsletter ▾

OHDSI APAC

OHDSI is a global, multi-stakeholder, interdisciplinary and open-science network that collaborates to bring out the value of health data through large-scale analytics. Our Asia-Pacific (APAC) community comprises six regional chapters (Australia, China, Japan, Singapore, South Korea, Taiwan) and has led important OHDSI initiatives around the world.

The [first OHDSI APAC Symposium](#) was held virtually Dec. 5-6, 2020, and it provided an opportunity for our Asia-Pacific collaborators (along with others around the world) to share research, provide community updates, collaborate in regional breakouts or network discussions, and have some OHDSI fun.

The APAC community has its own group in the OHDSI MS Teams environment to promote greater collaboration on our collaborative efforts. It will also be the home of our bi-weekly APAC Community Calls, where we will provide updates, share research presentations, collaborate on topics of shared interest, and plenty more. How can you get involved? First, [request access to our MS Teams Environment](#), then request access to [our OHDSI APAC workgroup](#). You can also join the meetings [by using this direct link](#).

Our calls, which are scheduled on a bi-weekly basis, take place Thursday at 10 am CST/SGT, 11 am KST/JST, 12:30 pm ACDT, as well as Wednesday at 10 pm EST and 7 pm PST.

All calls are recorded, so if you miss one or want to share with a collaborator, check out the call recordings below.

2020 Global Symposium ▸

2020 APAC Symposium ▸

Past OHDSI Events

Asia-Pacific (APAC) Community

Weekly Community Calls

Working Group Call Schedule

Upcoming APAC Community Calls

Date	Topic
March 25	Network Research
April 8	OMOP Projects
April 22	Regional Updates
May 6	10-Minute Tutorial
May 20	Collaborator Showcase Presentations
June 3	Network Research
June 17	Welcome To OHDSI
July 1	OMOP Projects

[@OHDSI](#) [www.ohdsi.org](#) [#JoinTheJourney](#) [linkedin.com/company/ohdsi](#)

Mar. 11, 2021 - Collaborator Showcase (Presentations by Ty Stanford and Jason Hsu)

OHDSI APAC - Our Asia-Pacific Community

OHDSI is a global, multi-stakeholder, interdisciplinary and open-science network that collaborates to bring out the value of health data through large-scale analytics. Our Asia-Pacific (APAC) community comprises six regional chapters (Australia, China, Japan, Singapore, South Korea, Taiwan) and has led important OHDSI initiatives around the world.

The [first OHDSI APAC Symposium](#) was held virtually Dec. 5-6, 2020, and it provided an opportunity for our Asia-Pacific collaborators (along with others around the world) to share research, provide community updates, collaborate in regional breakouts or network discussions, and have some OHDSI fun.

The APAC community has its own group in the OHDSI MS Teams environment to promote greater collaboration on our collaborative efforts. It will also be the home of our bi-weekly APAC Community Calls, where we will provide updates, share research presentations, collaborate on topics of shared interest, and plenty more. How can you get involved? First, [request access to our MS Teams Environment](#), then request access to [our OHDSI APAC workgroup](#). You can also join the meetings [by using this direct link](#).

Our calls, which are scheduled on a bi-weekly basis, take place Thursday at 10 am CST/SGT, 11 am KST/JST, 12:30 pm ACDT, as well as Wednesday at 10 pm EST and 7 pm PST.

All calls are recorded, so if you miss one or want to share with a collaborator, check out the call recordings below.

Upcoming APAC Community Calls	
Date	Topic
March 25	Network Research
April 8	OMOP Projects
April 22	Regional Updates
May 6	10-Minute Tutorial
May 20	Collaborator Showcase Presentations
June 3	Network Research
June 17	Welcome To OHDSI
July 1	OMOP Projects

Mar. 11, 2021 - Collaborator Showcase (Presentations by Ty Stanford and Jason Hsu)

Feb. 25, 2021 - Welcome To The Journey (Helping Our OHDSI Newcomers Get Started)

Theme: Welcome To OHDSI

Meeting contents included:

- Patrick Ryan and Mui Van Zandt introduce the OHDSI community and OHDSI APAC
- OHDSI experience sharing from 3 APAC collaborators
- Q&A from the audience

Recording





OHDSI Shoutouts!



Congratulations to
Seng Chan You on his
new role as **Research
Assistant Professor** at
Severance Hospital of
Yonsei University.

Collaborator Spotlight: Seng Chan You

Previous Spotlights: [Clair Blacketer](#) • [Kristin Kostka](#) • [Jenny Lane](#) • [Anthony Sena](#) • [Kees van Bochove](#) • [Mui Van Zandt](#)

Seng Chan You is a medical doctor who majored in internal medicine from Severance Hospital in Seoul, South Korea. He received his Master of Medical Science at the same university, and then he earned his PhD in the Department of Biomedical Informatics at Ajou University, and he has been a leader in the OHDSI community over the last several years. Honored with the 2018 OHDSI Titan Award for Clinical Application, Chan has led the expansion of the OHDSI network into the Asia-Pacific (APAC) region, including hosting the 2019 OHDSI Korea Symposium and assisting in the development of the 2020 OHDSI APAC Symposium.

Chan, a leader in several OHDSI workgroups, recently led the effort to have South Korean HIRA data available to the OHDSI global community during the COVID-19 study-a-thon. He co-led the study "Association of Ticagrelor vs Clopidogrel With Net Adverse Clinical Events in Patients With Acute Coronary Syndrome Undergoing Percutaneous Coronary Intervention" which was published in JAMA in October 2020, and has co-authored many OHDSI network studies, including the [LEGEND Hypertension study](#) published in [The Lancet](#).

Chan recently accepted a new position as a Research Assistant Professor at his alma mater. He recently shared thoughts on this new role, OHDSI's growth in the Asia-Pacific region, leading the COVID-19 data sharing efforts, and plenty more in the latest edition of the OHDSI Collaborator Spotlight.



What is your background, and how did you get connected to the OHDSI community?

I completed my residency in internal medicine in 2016. I was one of the stereotypical doctors who usually called the IT team when the computer didn't work. At that time, I got to know OHDSI, and I was drawn to the vision of OHDSI. I believed that healthcare data should be standardized, believing it could be possible within a few years. So I decided to study biomedical data science at Ajou University to learn biomedical data science and join OHDSI.

South Korea was one of the original COVID hotspots. Can you talk about what you learned from that experience, and how important it was to connect HIRA data with the OHDSI COVID study-a-thon?

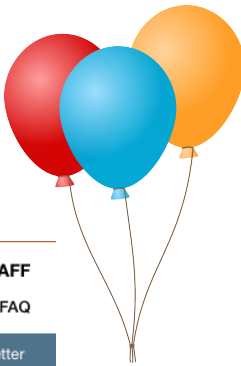
Indeed, South Korea is one of the countries most affected by COVID-19 from the very early stages of this pandemic. Explosive outbreaks occurred across South Korea in the first two months of the pandemic. When I attended the OHDSI meeting during early 2020, many OHDSIers were worried about the explosive outbreak of COVID-19 in Korea. As COVID-19 became a real pandemic, international collaboration became more important to tackle this disease. At that time, humans knew little about this novel infectious disease, and many unproven treatments were proposed. Though it was crucial to produce real-world data and evidence for COVID-19, most institutions did not share their medical data to let other researchers analyze.



<https://www.ohdsi.org/spotlight-seng-chan-you/>



OHDSI Shoutouts!



Congratulations to
Hua Xu on his new
role as **Associate
Dean for Innovation**
at UTHealth.



School of Biomedical
Informatics

PROSPECTIVE STUDENTS

CURRENT STUDENTS

CONTINUING EDUCATION

FACULTY & STAFF

RESEARCH

ABOUT

FAQ

News

Academic Update Newsletter

Hua Xu, PhD named Associate Dean for Innovation

UTHealth School of Biomedical Informatics (SBMI) is proud to announce the start of a new associate dean role. Professor and Director of the Center for Computational Biomedicine, [Hua Xu, PhD](#), will serve as SBMI's first associate dean for innovation.

While keeping his current titles, Xu's new role will entail leading all innovation, product development, and technology transfer efforts at SBMI. His initiatives will focus on business operations at SBMI, UTHealth, UTHealth affiliated clinical entities, and the broader community. Xu will also engage with key stakeholders to facilitate the successful development, evaluation, deployment, and maintenance of informatics products. In addition, he will develop mechanisms to support SBMI researchers in technology transfer of informatics applications.

"I look forward to representing SBMI within UTHealth and the broader community as the school engages in business development and commercialization activities," stated Xu. "In collaboration with other SBMI associate deans, I plan to help expand the school's catalog of informatics products for patient care, business operations, and clinical and translational research."

Xu joined SBMI in 2012 after spending four years serving as a faculty member in the Department of Biomedical informatics at Vanderbilt University. He has both a PhD and MPhil in Biomedical Informatics from Columbia University. He also has a MS in Computer Science from New Jersey Institute of Technology.

In 2018, Xu founded [Melax Technologies, Inc.](#) which develops tools for machine learning and natural language processing applications. Having this unique expertise, along with more than 12 years of faculty experience, makes Xu the ideal candidate for this new role.





OHDSI Shoutouts!



Congratulations to **Osaid Alser** who announced on Twitter that he was fully matched in surgery.



Osaid Alser, MD, MSc (Oxon) @OsaidalserMD · 23h

...

و كان فضل الله عليك عظيما ..

[#Match2021](#) !Fully matched in Surgery

Congratulations, you have matched!

Because you are fully matched, you are not eligible to participate in the Supplemental Offer and Acceptance Program® (SOAP®), and you will not have access to the *List of Unfilled Programs*. Information on where you matched will be available in the Registration, Ranking, and Results® (R3®) system and sent by email on Friday, March 19, 2021, at 12:00 PM Eastern Time.

48

9

801



Kristin @kricketchirps · 22h

...

Congrats Osaid!! This is wonderful news. You deserve it! The whole [@OHDSI](#) community is proud of you!



1

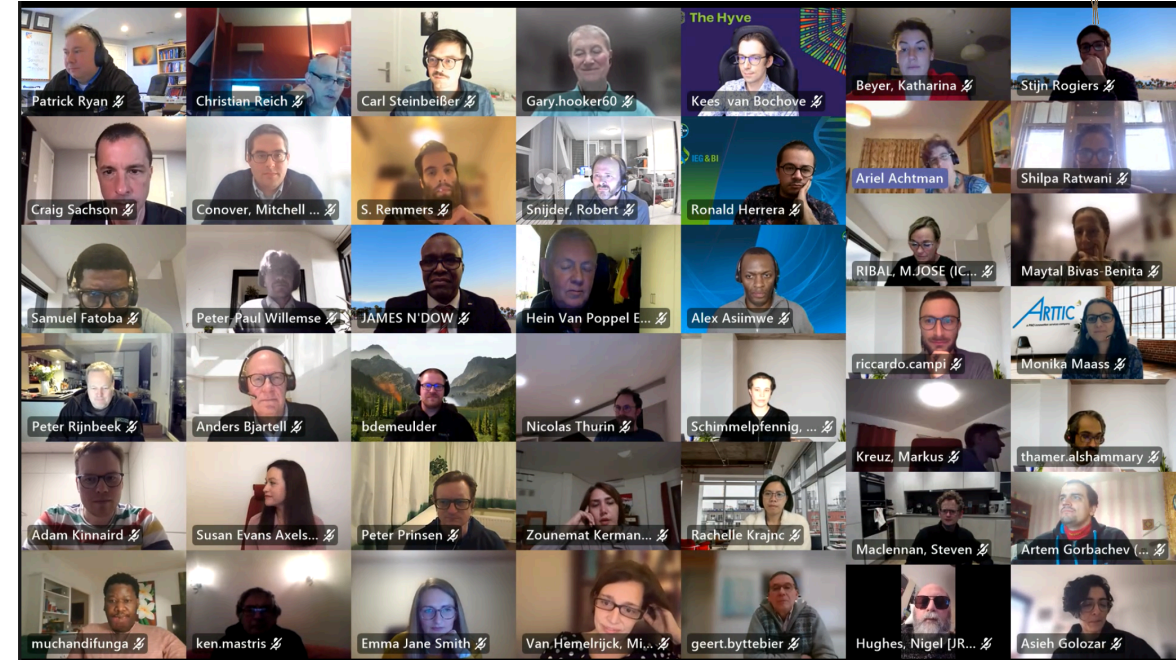




OHDSI Shoutouts!



The **Pioneer/EHDEN/OHDSI prostate cancer study-a-thon** was a terrific success last week, with more than 200 participants joining the important effort. We look forward to having representatives from this event present on the research/findings in a future community call!





OHDSI Shoutouts!



Any shoutouts from the community? Please share and help promote and celebrate OHDSI work!

Have a study published? Please send to sachson@ohdsi.org so we can share during this call and on our social channels.
Let's work together to promote the collaborative work happening in OHDSI!





Three Stages of The Journey

Where Have We Been?

Where Are We Now?

Where Are We Going?





Upcoming Workgroup Calls



www.ohdsi.org/upcoming-working-group-calls

Date	Time (ET)	Meeting
Tuesday	1 pm	Common Data Model
Tuesday	2 pm	Women of OHDSI
Tuesday	3 pm	OMOP CDM Oncology – Outreach/Research Subgroup
Wednesday	10 am	OMOP CDM Oncology – Development Subgroup
Wednesday	2 pm	GIS-Geographic Information System
Thursday	8 am	Psychiatry
Thursday	12 pm	HADES
Thursday	1 pm	OMOP CDM Oncology – CDM/Vocabulary Subgroup
Friday	10 am	Clinical Trials
Friday	10 am	Electronic Health Record
Friday	10 am	UK Biobank
Tuesday	9 am	OMOP CDM Oncology – Genomic Subgroup



@OHDSI

www.ohdsi.org

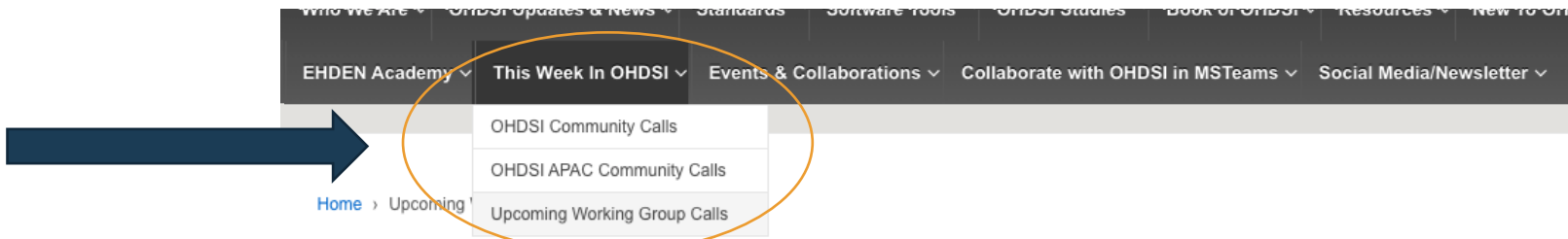
#JoinTheJourney



[linkedin.com/company/ohdsi](https://www.linkedin.com/company/ohdsi)



Upcoming Workgroup Calls



Upcoming Working Group Calls

Last updated March 15, 2021

OMOP CDM Oncology WG – Genomic Subgroup Meeting: Tuesday, March 16 at 9 am ET ([Meeting Link](#))

Meetings are traditionally scheduled for every Tuesday at 9 am ET.

Common Data Model WG: Tuesday, March 16 at 1 pm ET: ([Meeting Link](#))

Meetings are traditionally scheduled for the first and third Tuesdays of each month at 1 pm ET.

Women of OHDSI WG: Tuesday, March 16 at 2 pm ET ([Meeting Link](#))

Meetings are traditionally scheduled for the third Tuesday of each month at 2 pm ET.

OMOP CDM Oncology WG – Outreach/Research Subgroup Meeting: Tuesday, March 16 at 3 pm ET: ([Meeting Link](#))

Meetings are traditionally scheduled for the first and third Tuesday of each month at 3 pm ET.

OMOP CDM Oncology WG – Development Subgroup Meeting: Wednesday, March 17 at 10 am ET: ([Meeting Link](#)) Meetings are traditionally scheduled for every other Wednesday at 10 am ET.

Data Quality Dashboard Development WG: Wednesday, March 17 at 1 pm ET ([Meeting Link](#))

Meetings are traditionally scheduled for the third Wednesday of each month at 1 pm ET.

GIS-Geographic Information System WG Meeting: Wednesday, March 17 at 2 pm ET: ([Meeting Link](#))

Meetings are traditionally scheduled for every other Wednesday at 2 pm ET.

Psychiatry WG: Thursday, March 18 at 8 am ET: ([Meeting Link](#))

Meetings are traditionally scheduled for every other Thursday at 8 am ET.

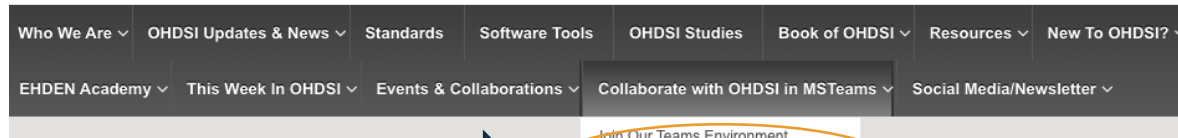


Get Access To Different Teams/WGs/Chapters



OHDSI

OBSERVATIONAL HEALTH DATA SCIENCES AND INFORMATICS



Welcome to OHDSI!

The Observational Health Data Sciences and Informatics (or OHDSI, pronounced "Odyssey") program is a multi-stakeholder, interdisciplinary collaborative to bring out the value of health data through large-scale analytics. All our solutions are open-source.

OHDSI has established an international network of researchers and observational health databases with a central coordinating center

2020 OHDSI Symposium

Our 2020 OHDSI Global Symposium brought together a global research community for 18 hours of open science, international collaboration and community fun. The day included research presentations from community members, panels that brought together leaders from major healthcare organizations, as well as network sessions, the annual collaborator showcase, and plenty more. Check it all out at the link below.

3. Select the workgroups you want to join (you can refer to the WIKI for work group objectives www.ohdsi.org/web/wiki/doku.php?id=projects:overview)

- ☐ ATLAS
- ☐ Clinical Trials
- ☐ Common data model
- ☐ Data Quality Dashboard Development
- ☐ Electronic Health Record (EHR) ETL
- ☐ Geographic Information System (GIS)
- ☐ HADES Health Analytics Data-to-Evidence Suite
- ☐ Latin America
- ☐ Medical Devices
- ☐ Natural Language Processing
- ☐ OHDSI APAC
- ☐ OHDSI APAC Steering Committee
- ☐ OHDSI Steering Committee
- ☐ Oncology
- ☐ Patient-Generated Health Data
- ☐ Pharmacovigilance Evidence Investigation
- ☐ Phenotype Development and Evaluation
- ☐ Population-Level Effect Estimation / Patient-Level Prediction

- ☐ Psychiatry
- ☐ Surgery and Perioperative Medicine
- ☐ UK Biobank
- ☐ Women of OHDSI

4. Select the chapter(s) you want to join

- ☐ Australia
- ☐ China
- ☐ Europe
- ☐ Japan
- ☐ Korea
- ☐ Singapore
- ☐ Taiwan

5. Select the studies you want to join

- ☐ CHARYBDIS (Characterizing Health Associated Risks and Your Baseline Disease in SARS-Cov-2)
- ☐ HERA-Health Equity Research Assessment
- ☐ PIONEER for Prostate Cancer
- ☐ SCYLLA (SARS-Cov-2 Large-scale Longitudinal Analyses)



New Workgroups?



Interest in an OHDSI Education Working Group?

General



nigehughes Nigel Hughes

15d

Hi. I'm the Project Lead for EHDEN alongside [@Rijnbeek](#) and leading also on the EHDEN Academy with our small but dedicated team.

I wondered if there would be interest in setting up an Education WG to explore, develop and oversee the educational aspects of promoting open science, the OMOP CDM/OHDSI framework, tools, methods and skills for the OHDSI and wider research community?

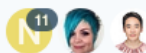
I think with the proposed OHDSI Institute in mind, as well as work in South Korea and Australia, we would have commonality of purpose and intent here to align on global education opportunities, cohesiveness of resources and materials development and alignment on overall goals?

Looking forward to responses, but especially your thoughts, [@hripcsa](#), [@Patrick_Ryan](#), [@Rijnbeek](#), [@Daniel_Prieto](#), [@Nicole_Pratt](#), [@Andrew](#), [@Christian_Reich](#), [@rwpark](#), et al?

1 Reply ▾

2 ❤️ 🔗 ... ↩ Reply

created last reply 22 223 12 6
N 15d 1d replies views users likes



Call for Participation in New Working Group: Early-Stage Researchers

General



FAAIZAH_ARSHAD

13h

Hi everyone,

I am collaborating with a few student researchers to lead a new working group called the 'Early-Stage Researchers Working Group'. The objectives are:

- to build a casual environment for younger community members to meet with each other and work together without feeling intimidated by their seniors
- to create leadership experiences for junior researchers
- to invite individuals to discuss and present research
- to enable junior researchers to take part in OHDSI projects

The purpose of this post is to gauge for interest and to decide on a regular schedule. So, if you are interested, please let us know in the comments below- all junior researchers are welcome!!

As of now, we plan to have meetings monthly. Please answer this anonymous poll to indicate your availability.

docs.google.com 3



Early Stage Researchers Working Group

Hello! Thank you so much for your interest in this working group. We plan to have meetings monthly and would like to accommodate for as many people's schedules as possible. Please indicate your availability below.

We recognize that there won't be a perfect time for everybody, but we hope to accommodate for as many people's schedule as possible.

Please feel free to contact me at faaizaha23@g.ucla.edu for further questions.

Excited to collaborate!

Regards,

Faaizah Arshad



EHDEN Open Call for SMEs

EHDEN opened **its third open call for SMEs** to apply for training and certification to convert health data from various forms to the OMOP common data model.

This call will run from March 15 through April 12.

EH DEN
EUROPEAN HEALTH DATA & EVIDENCE NETWORK

APPLY NOW

Third open call for SMEs wanting to be trained and certified in mapping health data to the OMOP common data model.

- Free training via the **EHDEN Academy**
- Two-day virtual **certification** meeting
- Grow your **business** working with real world health data

March 15th - April 12th

EH DEN.EU

Visit [EH DEN.eu](https://ehden.eu) for more information



Where Are We Going?

**Any other announcements
of upcoming work, events,
deadlines, etc?**





Three Stages of The Journey

Where Have We Been?

Where Are We Now?

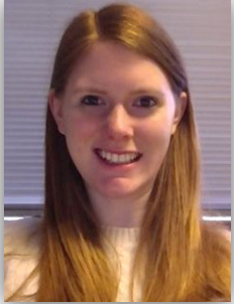
Where Are We Going?





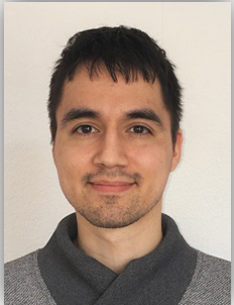
March 16 Community Call Topic

Advances In Patient-Level Prediction



Best Practices for Prediction Using Observational Data

Jenna Reps, Associate Director, Janssen Research & Development



External Validation of Existing Dementia Prediction Models on Observational Health Data

Henrik John, Scientific Researcher, Erasmus University Medical Center



The Prediction Model Library

Ross Williams, PhD Student, Erasmus University Medical Center