



# PIONEER Prostate Cancer Study-A-Thon

**OHDSI Community Call**  
**May 18, 2021 • 11 am ET**



# Upcoming OHDSI Community Calls

Date	Topic
May 18	Focus Topic: Prostate Cancer Study-A-Thon
May 25	OHDSI Fun
June 1	OHDSI OKR Mid-Year Review
June 8	10-Minute Tutorials: PHOEBE, Cohort Diagnostics, ATC Hierarchy
June 15	Professional Development Breakouts: Clinical Epidemiology, Information/Data Management, Open-Source Software Development, Statistical Methods
June 22	Community Presentations: New Developments within OHDSI
June 29	Focus Topic: EUMEAUS (Evaluating Use of Methods for Adverse Event Under Surveillance)



# Upcoming OHDSI Community Calls

Date	Topic
May 18	Focus Topic: Prostate Cancer Study-A-Thon
May 25	OHDSI Fun
June 1	OHDSI OKR Mid-Year Review
June 8	10-Minute Tutorials: PHOEBE, Cohort Diagnostics, ATC Hierarchy
June 15	Professional Development Breakouts: Clinical Epidemiology, Information/Data Management Open-Source Software Development, Statistical Methods
June 22	Community Presentations: New Developments within OHDSI
June 29	Focus Topic: EUMEAUS (Evaluating Use of Methods for Adverse Event Under Surveillance)



# Three Stages of The Journey

**Where Have We Been?**

**Where Are We Now?**

**Where Are We Going?**





# OHDSI Shoutouts!



Congratulations to the team of **Byungkon Kang, Jisang Yoon, Ha Young Kim, Sung Jin Jo, Yourim Lee, and Hye Jin Kam** on this study posted last week in *JAMIA*: **Deep-learning-based automated terminology mapping in OMOP-CDM.**

[Issues](#)[More Content ▾](#)[Submit ▾](#)[Purchase](#)[Alerts](#)[About ▾](#)[All Journals of the American Medical Association](#)

## Deep-learning-based automated terminology mapping in OMOP-CDM

Byungkon Kang, Jisang Yoon, Ha Young Kim, Sung Jin Jo, Yourim Lee, Hye Jin Kam ✉

*Journal of the American Medical Association*, ocab030,

<https://doi.org/10.1093/jamia/ocab030>

Published: 13 May 2021 [Article history ▾](#)

[Cite](#)[Permissions](#)[Share ▾](#)

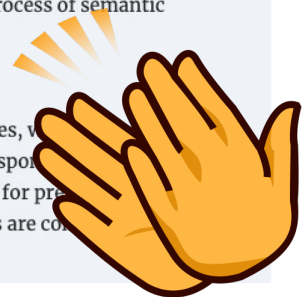
### Abstract

#### Objective

Accessing medical data from multiple institutions is difficult owing to the interinstitutional diversity of vocabularies. Standardization schemes, such as the common data model, have been proposed as solutions to this problem, but such schemes require expensive human supervision. This study aims to construct a trainable system that can automate the process of semantic interinstitutional code mapping.

#### Materials and Methods

To automate mapping between source and target codes, we used an embedding-based semantic similarity between corresponding sentences. We also implement a systematic approach for pre-processing data for similarity computation. Experimental results are compared with traditional word-based mappings.





# OHDSI Shoutouts!

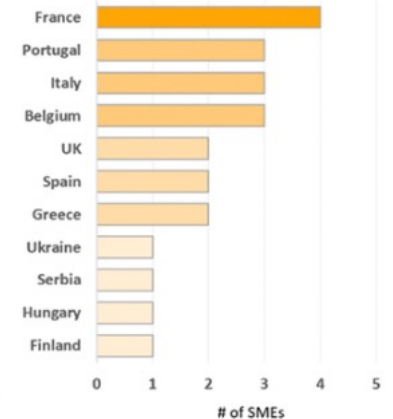


Congratulations to both our EHDEN colleagues and the 23 Small & Medium-Sized Enterprises who were selected to receive training and become certified to support mapping to the OMOP Common Data Model, and perform services in the ecosystem.



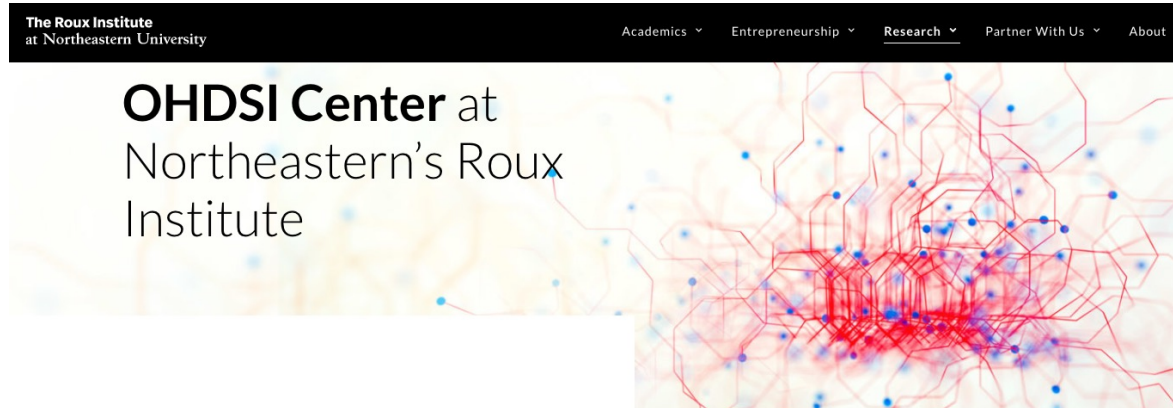
Selected SMEs (n=23)

Applications (n=40)





# New OHDSI Center Webpage



## Leading real-world evidence generation, research, and learning to advance global health

The Roux Institute's Observational Health Data Sciences and Informatics Center—or OHDSI, pronounced "odyssey"—advances healthcare by fostering reproducible research through open science. Our collaborators maintain a network of standardized clinical data covering nearly 10% of the world's population. We support research collaborations among academia, industries, and governments across disciplines and around the globe. And as part of Northeastern University, we will provide education and training programs for learners and institutional partners.



**Data and research support**  
Provide technical architecture and subject-matter expertise for large-scale analytics for 160+ datasets standardized to OMOP Common Data Model



**Methods development**  
Establish empirical methods for achieving reproducible, reliable, evidence-based results



**Education**  
Host workshops and graduate programs to provide education, training, and credentials

## Benefits for collaborators

The OHDSI Center at the Roux Institute will provide:

- Ongoing support to nurture OHDSI's growing global network of collaborators
- Grant writing and proposal support for advancing OHDSI research initiatives in New England and beyond
- Repository of research results, including evidence-based clinical practice recommendations
- Training in OHDSI tools and open-source statistical methodologies
- Badges and graduate degree opportunities
- Annual conference, symposia, and workshops

**2,100+**

individual collaborators

**300+**

organizations

**2.7B**

health records representing nearly **578M** unique patients

**23**

countries participating in the U.S., Asia, Europe, and South America

[roux.northeastern.edu/ohdsi/](https://roux.northeastern.edu/ohdsi/)





# ATLAS/WebAPI 2.9 Release

## Atlas/WebAPI 2.9 Released

General



Chris\_Knoll

25m

We are pleased to announce that the 2.9.0 release of Atlas and WebAPI have been formally released on github. You can find the release notes at the following links:

Atlas: <https://github.com/OHDSI/Atlas/releases/tag/v2.9.0>

WebAPI: <https://github.com/OHDSI/WebAPI/releases/tag/v2.9.0>

One noteworthy feature with this release is the addition of localized language support for a few languages (English, Korean and Chinese).

Hotfix releases (2.9.1, 2.9.2, etc) will be announced on this thread.

We are planning the next minor release in August 2021, which will be v2.10.0.

[@jon\\_duke](#) [@MaximMoinat](#)

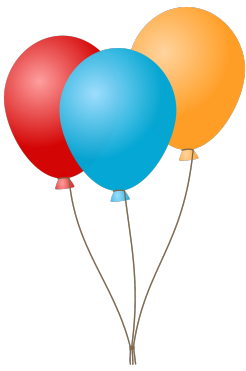
I would like to thank everyone who contributed to this release. We are starting to get on the regular release schedules of either 3-4 months (targeting 1 release per quarter), and everyone made great efforts to try to keep to this time table. Good work!

♡ 🔗 ... ↩ Reply





# OHDSI Shoutouts!



**Any shoutouts from the community? Please share and help promote and celebrate OHDSI work!**

Have a study published? Please send to [sachson@ohdsi.org](mailto:sachson@ohdsi.org) so we can share during this call and on our social channels.  
Let's work together to promote the collaborative work happening in OHDSI!





# Three Stages of The Journey

**Where Have We Been?**

**Where Are We Now?**

**Where Are We Going?**





# Upcoming Workgroup Calls



Date	Time (ET)	Meeting
Tuesday	1 pm	Common Data Model
Tuesday	3 pm	OMOP CDM Oncology – Outreach/Rsearch Subgroup
Wednesday	8 am	Vaccine Vocabulary
Wednesday	1 pm	Data Quality Dashboard
Thursday	12 pm	HADES
Thursday	1 pm	OMOP CDM Oncology – CDM/Vocabulary Subgroup
Friday	9 am	Education
Friday	10 am	Registry (formerly UK Biobank)
Tuesday	9 am	OMOP CDM Oncology – Genomic Subgroup

[www.ohdsi.org/upcoming-working-group-calls](http://www.ohdsi.org/upcoming-working-group-calls)



# Get Access To Different Teams/WGs/Chapters



# OHDSI

OBSERVATIONAL HEALTH DATA SCIENCES AND INFORMATICS

Who We Are ▾ OHDSI Updates & News ▾ Standards Software Tools OHDSI Studies Book of OHDSI ▾ Resources ▾ New To OHDSI? ▾

EHDSI Academy ▾ This Week In OHDSI ▾ 2021 Global Symposium ▾ Events/Collaborations ▾ Collaborate in MSTEams ▾ Follow OHDSI ▾

## Welcome to OHDSI!

The Observational Health Data Sciences and Informatics (or OHDSI, pronounced "Odyssey") program is a multi-stakeholder, interdisciplinary collaborative to bring out the value of health data through large-scale analytics. All our solutions are open-source.

OHDSI has established an international network

## 2020 OHDSI Symposium

Our 2020 OHDSI Global Symposium brought together a global research community for 18 hours of open science, international collaboration and community fun. The day included research presentations from community members, panels that brought together leaders from major healthcare organizations, as well as network sessions, the annual collaborator

4. Select the workgroups you want to join (you can refer to the WIKI for work group objectives

[www.ohdsi.org/web/wiki/doku.php?id=projects:overview](http://www.ohdsi.org/web/wiki/doku.php?id=projects:overview))

- ☐ ATLAS
- ☐ Clinical Trials
- ☐ Common Data Model
- ☐ Data Quality Dashboard Development
- ☐ Early-stage Researchers
- ☐ Education Work Group
- ☐ Electronic Health Record (EHR) ETL
- ☐ Geographic Information System (GIS)
- ☐ HADES Health Analytics Data-to-Evidence Suite
- ☐ Latin America
- ☐ Medical Devices
- ☐ Natural Language Processing
- ☐ OHDSI APAC
- ☐ OHDSI APAC Steering Committee
- ☐ OHDSI Steering Committee
- ☐ Oncology
- ☐ Patient-Generated Health Data
- ☐ Pharmacovigilance Evidence Investigation

- ☐ Phenotype Development and Evaluation
- ☐ Population-Level Effect Estimation / Patient-Level Prediction
- ☐ Psychiatry
- ☐ Registry (formerly UK Biobank)
- ☐ Surgery and Perioperative Medicine
- ☐ Vaccine Vocabulary
- ☐ Women of OHDSI

5. Select the chapter(s) you want to join

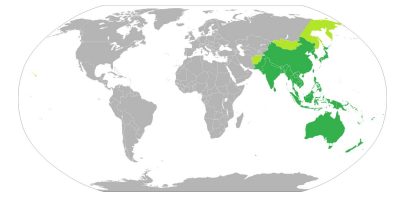
- ☐ Australia
- ☐ China
- ☐ Europe
- ☐ Japan
- ☐ Korea
- ☐ Singapore
- ☐ Taiwan

6. Select the studies you want to join

- ☐ HERA-Health Equity Research Assessment
- ☐ PIONEER for Prostate Cancer (study-a-thon ended)
- ☐ SCYLLA (SARS-Cov-2 Large-scale Longitudinal Analyses)



# APAC Community Call



The next APAC Community Call will be this week (Thursday/Wednesday, depending on your location), and the focus will be 10-minute tutorials.

**Xialin Wang:** WhiteRabbit & Rabbit-In-A-Hat

**Seng Chan You:** Usagi

**Sathappan Selva Muthu Kumaran:** Data Quality Dashboard

Date	Topic
May 20	10-Minute Tutorials
June 3	Network Research
June 17	Welcome to OHDSI
July 1	OMOP Projects



# Call for Collaboration

**Seng Chan You** is seeking collaborators to join in the following OHDSI Network Study: **CEEAMOS (Comparative Estimation of the Effects of Anti-hypertensive Medications on the Occurrence of Schizophrenia)**. More information, as well as the link to the study package, is available at the link below.

## Join the OHDSI network study: The risk of schizophrenia in ACE inhibitor users compared with users of other antihypertensives

■ Researchers



SCYou Seng Chan You

1 1d

Dear all,

The new network study is launched to evaluate the risk of schizophrenia in ACE inhibitor users compared with users of other antihypertensives.

### CEEAMOS(Comparative Estimation of the Effects of Anti-hypertensive Medications on the Occurrence of Schizophrenia)

**Rationale:** Schizophrenia is a mental disorder that affects about 1 percent of the world's population and a severe disorder which leads to functional deterioration. Genetic findings have been considered to play important roles in schizophrenia occurrence. Recently, it is reported that antihypertensive target gene was associated with schizophrenia risk. Specifically, the results for ACE messenger RNA and protein related to ACE inhibitor were shown. However real-world evidence of schizophrenia risk in relation with antihypertensive medications is scarce.

**Objectives:** We aim to evaluate the comparative risk of incident schizophrenia in patients exposed to antihypertensive drugs.

We will conduct systematic, multinational study to estimate the relative risk of outcomes (incident schizophrenia or incident schizophrenia requiring ER visit) in antihypertensive medication cohort (ACE inhibitor, Angiotensin receptor blockers, and Thiazide). We will compare the target cohort with the comparator cohort for the hazards of outcome during the time-at-risk by applying a cox proportional hazards model after propensity score adjustment.

Before starting the study, we want you to execute diagnostics package to validate feasibility of the study in each site.

The package is available at [here](#) 4

Please let me know if you have further questions.

Contacts of study leaders

Dong Yun Lee: [dongyun90@ajou.ac.kr](mailto:dongyun90@ajou.ac.kr)

Seng Chan You: [seng.chan.you@ohdsi.org](mailto:seng.chan.you@ohdsi.org)

[forums.ohdsi.org/t/join-the-ohdsi-network-study-the-risk-of-schizophrenia-in-ace-inhibitor-users-compared-with-users-of-other-antihypertensives/14008](https://forums.ohdsi.org/t/join-the-ohdsi-network-study-the-risk-of-schizophrenia-in-ace-inhibitor-users-compared-with-users-of-other-antihypertensives/14008)





# Collaborator Showcase Abstracts Due June 18

We are **ONE MONTH AWAY** from the **June 18 deadline** for submissions for the 2021 Collaborator Showcase.

We are accepting submissions for posters, oral presentations and software demos.

## OHDSI

### 2021 OHDSI Collaborators Showcase Brief Report Submission Form- Posters, Oral Talks and Software Demonstrations

Thank you for your interest in the 2021 OHDSI Collaborators Showcase! We are delighted that you are interested in showcasing your work at this year's virtual symposium showcase. For planning purposes, please take a few minutes to fill out this submission form to help the Scientific Review Committee better understand your solution.

By filling out this form you may choose if you would like to present your work as a poster, an oral talk or a software demonstration (or all three). If a poster or software demo, you will present it during the Collaborator Showcase at the symposium. If an Oral talk, you will present an estimated 7-minute talk at the symposium.

If you wish to present as a poster or an oral talk only, after you complete that question below the form will skip you to the section to upload your brief report. If you wish to present as a software demo only or also with a poster and/or oral talk, after you answer that question below, you will complete several questions on the software demo. You will then be asked to submit a one-page overview of your software. If you want to submit for all three (software demo, poster and/or oral talk), it will then ask you to submit a brief report for the poster and/or oral submission.

Although we strive to accommodate your requested presentation format, it is not guaranteed. If the review committee has selected your work to be presented at this year's showcase, you will be notified via email by August 2, 2021 and the presentation format will be confirmed at that time.

Topics should align with at least one of OHDSI's strategic areas of focus:

- Observational data standards and management
- Open-source analytics development
- Methodological research
- Clinical applications

#### SUBMISSION INSTRUCTIONS:

A brief report submission template can be found by using the below link:  
[https://docs.google.com/document/d/1GADPitvH1eXHX\\_W9qBOlg-nv2gAVnloH2c7kCgtWGqk/edit?usp=sharing](https://docs.google.com/document/d/1GADPitvH1eXHX_W9qBOlg-nv2gAVnloH2c7kCgtWGqk/edit?usp=sharing)

The document can be downloaded as a Microsoft Word document by clicking on the link and selecting File->Download As...-> Microsoft Word (.docx).



# Where Are We Going?

**Any other announcements  
of upcoming work, events,  
deadlines, etc?**





# Three Stages of The Journey

**Where Have We Been?**

**Where Are We Now?**

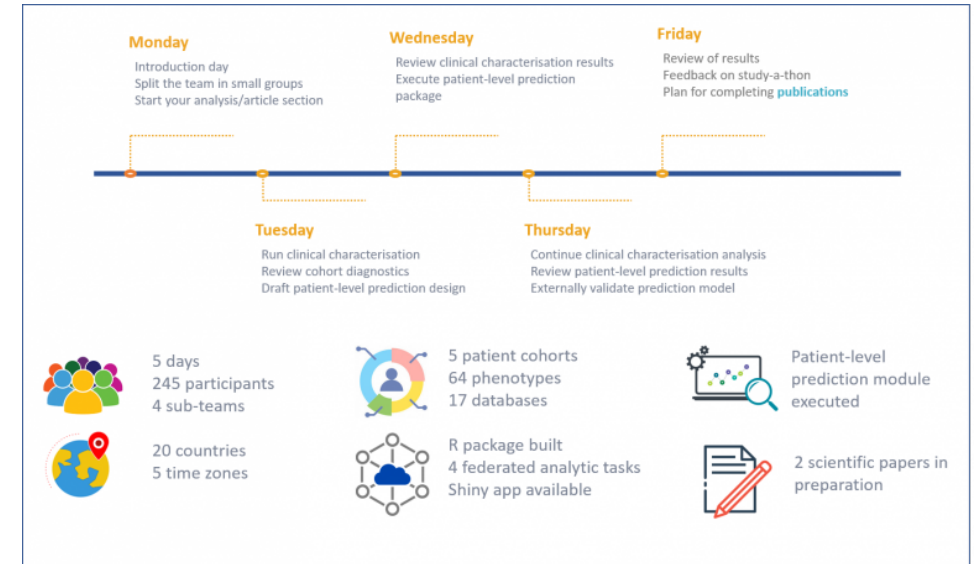
**Where Are We Going?**





# May 18: Prostate Cancer Study Report

Today we will get a full report on the 2021 PIONEER Prostate Cancer Study-A-Thon. Representatives from the 5-day event will provide a full report of the collaboration, as well as the continuing work.



Kees van Bochove



Giorgio Gandaglia



Asieh Golozar



Bertrand de Meulder



Ariel Achtman



Robert Snijder