



# Mother's Day-Themed Breakout Conversations

OHDSI Community Call  
May 10, 2022 • 11 am ET



# Upcoming OHDSI Community Calls

Date	Topic
May 17	OHDSI Debates
May 24	Open Studies
May 31	Workgroup OKRs
June 7	Welcome to OHDSI
June 14	OHDSI Scholarship (Publications)
June 21	10-Minute Tutorials
June 28	European Symposium Recap



# Upcoming OHDSI Community Calls

Date	Topic
May 17	OHDSI Debates
May 24	Open Studies
May 31	Workgroup OKRs
June 7	Welcome to OHDSI
June 14	OHDSI Scholarship (Publications)
June 21	10-Minute Tutorials
June 28	European Symposium Recap



# May 17: OHDSI Debates

## Debate #1

### Phenotype Development: One-size-fits-all vs. Tailored-per-databases



**Azza Shoaibi**  
Associate Director  
Janssen Research & Development



**Asieh Golozar**  
VP, Global Head of Data Science  
Odysseus Data Services, Inc.

## Debate #2

### Study Diagnostics: Nice-to-have vs. Essential requirements



**Dani Prieto-Alhambra**  
Professor  
Univ. of Oxford and Erasmus Univ.



**Martijn Schuemie**  
Research Fellow, Epidemiology Analytics  
Janssen Research & Development





# Three Stages of The Journey

**Where Have We Been?**

**Where Are We Now?**

**Where Are We Going?**





# OHDSI Shoutouts!



Congratulations to the team of **Fatemeh Amrollahi, Supreeth P Shashikumar, Angela Meier, Lucila Ohno-Machado, Shamim Nemati, and Gabriel Wardi** on the publication of **Inclusion of social determinants of health improves sepsis readmission prediction models** in JAMIA.

[Issues](#)[More Content ▾](#)[Submit ▾](#)[Purchase](#)[Alerts](#)[About ▾](#)[All Journal of the American](#)

## Inclusion of social determinants of health improves sepsis readmission prediction models [Get access >](#)

Fatemeh Amrollahi, Supreeth P Shashikumar, Angela Meier, Lucila Ohno-Machado, Shamim Nemati, Gabriel Wardi ✉

*Journal of the American Medical Informatics Association*, ocac060,

<https://doi.org/10.1093/jamia/ocac060>

Published: 02 May 2022 [Article history ▾](#)

“ Cite [Permissions](#) [Share ▾](#)

### Abstract

#### Objective

Sepsis has a high rate of 30-day unplanned readmissions. Predictive modeling has been suggested as a tool to identify high-risk patients. However, existing sepsis readmission models have low predictive value and most predictive factors in such models are not actionable.

#### Materials and Methods

Data from patients enrolled in the AllofUs Research Program cohort from 35 hospitals were used to develop a multicenter validated sepsis-related unplanned readmission model that incorporates clinical and social determinants of health (SDH) to predict 30-day unplanned readmissions. Sepsis cases were identified using concepts represented in the Observational Medical Outcomes Partnership. The dataset included over 60 clinical/laboratory features and over 100 SDH features.



# OHDSI Shoutouts!



Two Oxford shoutouts from **Kristin Kostka**.

Congratulations to **Jenny Lane** on being hooded over the weekend, and to **Albert Prats-Urbe** for passing his PhD defense.





# OHDSI Shoutouts!



Learn more about 2021 Titan Award winner **Asieh Golozar** and her OHDSI journey in the latest collaborator spotlight.

## Spotlight: Asieh Golozar



There is a lot of energy and good will in the community. It is open, inclusive, and extremely diverse. I get my energy from the community. The enthusiasm and drive to do the right thing and to improve human lives, and the possibility to work with such diverse group of individuals and learn from them excites me and pushes me to do more. I am extremely proud to be a part of this effort.



[www.ohdsi.org/spotlight-asieh-golozar](http://www.ohdsi.org/spotlight-asieh-golozar)





# OHDSI Shoutouts!



**Any shoutouts from the community? Please share and help promote and celebrate OHDSI work!**

Have a study published? Please send to [sachson@ohdsi.org](mailto:sachson@ohdsi.org) so we can share during this call and on our social channels.  
Let's work together to promote the collaborative work happening in OHDSI!





# Three Stages of The Journey

**Where Have We Been?**

**Where Are We Now?**

**Where Are We Going?**





# Upcoming Workgroup Calls




Date	Time (ET)	Meeting
Tuesday	12 pm	Common Data Model
Tuesday	3 pm	OMOP CDM Oncology Outreach/Research Subgroup
Wednesday	10 am	FHIR and OMOP Digital Quality Measurements Subgroup (ZOOM)
Wednesday	2 pm	Natural Language Processing
Thursday	12 pm	FHIR and OMOP Oncology Subgroup
Thursday	1 pm	OMOP CDM Oncology Vocabulary/Development Subgroup
Friday	9 am	GIS-Geographic Information System Development
Friday	10 am	Phenotype Development and Evaluation
Friday	10:30 am	Clinical Trials
Friday	10 pm	China Chapter

[www.ohdsi.org/upcoming-working-group-calls](http://www.ohdsi.org/upcoming-working-group-calls)



# Get Access To Different Teams/WGs/Chapters



## OHDSI

OBSERVATIONAL HEALTH DATA SCIENCES AND INFORMATICS

Who We Are ▾

OHDSI Updates & News ▾

Standards ▾

Software Tools ▾

OHDSI Studies ▾

Book of OHDSI ▾

Resources ▾

New To OHDSI? ▾

OHDSI Community Calls ▾

Past Events & Collaborations ▾

Learn About & Join OHDSI Workgroups ▾

This Week In OHDSI

EHDEN Academy ▾

OHDSI Annual Report: Our Journey

Support OHDSI ▾

Newsletters ▾

Follow OHDSI on Social ▾

Welcome to OHDSI!

The Observational Health Data Sciences and Informatics (or OHDSI, pronounced "Odyssey") program is a multi-stakeholder, interdisciplinary collaborative to bring out the value of health data through large-scale analytics. All our solutions are open-source.

OHDSI has established an international network of researchers and observational health databases with a central coordinating center housed at Columbia University.

Read more [about us](#), about [our goals](#), and how you can [help support the OHDSI community](#).

2022 OHDSI Symposium

The 2022 OHDSI Symposium will be held Oct. 14-16 at the Bethesda North Marriott Hotel & Conference Center, and registration has opened.

We will hold the main conference on Friday, Oct. 14, which will include our collaborator showcase. On Saturday, Oct. 15, we will hold a full-day tutorial called "An Introductory Journey From Data To Evidence." There will be other community activities during the weekend as well. Please check out the symposium home page to learn more and register!

2022 OHDSI Global Symposium

5. Select the workgroups you want to join (you can refer to the WIKI for work group objectives [www.ohdsi.org/web/wiki/doku.php?id=projects:overview](http://www.ohdsi.org/web/wiki/doku.php?id=projects:overview))

- ☐ ATLAS
- ☐ Clinical Trials
- ☐ Common Data Model
- ☐ Data Quality Dashboard Development
- ☐ Early-stage Researchers
- ☐ Education Work Group
- ☐ Eyecare and Vision Research
- ☐ FHIR and OMOP
- ☐ Geographic Information System (GIS)
- ☐ HADES Health Analytics Data-to-Evidence Suite
- ☐ Healthcare Systems Interest Group (formerly EHR)
- ☐ Health Equity
- ☐ Latin America
- ☐ Medical Devices
- ☐ Medical Imaging
- ☐ Natural Language Processing
- ☐ OHDSI APAC
- ☐ OHDSI APAC Steering Committee
- ☐ OHDSI Steering Committee
- ☐ Oncology
- ☐ Open-source Community

- ☐ Phenotype Development and Evaluation
- ☐ Population-Level Effect Estimation / Patient-Level Prediction
- ☐ Psychiatry
- ☐ Registry (formerly UK Biobank)
- ☐ Vaccine Evidence

6. Select the chapter(s) you want to join

- ☐ Africa
- ☐ Australia
- ☐ China
- ☐ Europe
- ☐ Japan
- ☐ Korea
- ☐ Singapore
- ☐ Taiwan

You can print a copy of your answer after you submit

Submit



# Get Access To Different Teams/WGs/Chapters



**General** Posts Files **Join Work groups, Chapters, and Studies** Meet

## OHDSI MTeams Work groups, Chapters, and Studies Registration

OHDSI is using MTeams to further encourage active collaboration within the community. Within the OHDSI organization, there are separate teams for work groups, chapters, and studies, as well as OHDSI community activities (such as the OHDSI2020 Symposium). All teams are open to all collaborators. Below please indicate which Team you would like to join and the OHDSI coordinating center team will grant access.

\* Required

1. First and Last Name \*

Enter your answer

OHDSI has established an international network of researchers and observational health databases with a central coordinating center based at Columbia University.

Closing Ceremony that focused on OHDSI's work through the perspective of a patient.

There were also a pair of full-day activities, including the first OHDSI Reproducibility...

5. Select the workgroups you want to join (you can refer to the WIKI for work group objectives [www.ohdsi.org/web/wiki/doku.php?id=projects:overview](http://www.ohdsi.org/web/wiki/doku.php?id=projects:overview))

<input type="checkbox"/> ATLAS	<input type="checkbox"/> Phenotype Development and Evaluation
<input type="checkbox"/> Clinical Trials	<input type="checkbox"/> Population-Level Effect Estimation / Patient-Level Prediction
<input type="checkbox"/> Common Data Model	<input type="checkbox"/> Psychiatry
<input type="checkbox"/> Data Quality Dashboard Development	<input type="checkbox"/> Registry (formerly UK Biobank)
<input type="checkbox"/> Early-stage Researchers	<input type="checkbox"/> Vaccine Evidence
<input type="checkbox"/> Education Work Group	
<input type="checkbox"/> Eyecare and Vision Research	
<input type="checkbox"/> FHIR and OMOP	
<input type="checkbox"/> Geographic Information System (GIS)	
<input type="checkbox"/> HADES Health Analytics Data-to-Evidence Suite	
<input type="checkbox"/> Healthcare Systems Interest Group (formerly EHR)	
<input type="checkbox"/> Health Equity	
<input type="checkbox"/> Latin America	
<input type="checkbox"/> Medical Devices	
<input type="checkbox"/> Medical Imaging	
<input type="checkbox"/> Natural Language Processing	
<input type="checkbox"/> OHDSI APAC	
<input type="checkbox"/> OHDSI APAC Steering Committee	
<input type="checkbox"/> OHDSI Steering Committee	
<input type="checkbox"/> Oncology	
<input type="checkbox"/> Open-source Community	

6. Select the chapter(s) you want to join

<input type="checkbox"/> Africa
<input type="checkbox"/> Australia
<input type="checkbox"/> China
<input type="checkbox"/> Europe
<input type="checkbox"/> Japan
<input type="checkbox"/> Korea
<input type="checkbox"/> Singapore
<input type="checkbox"/> Taiwan

You can print a copy of your answer after you submit

**Submit**



# OHDSI2022 Workgroup Activities

Saturday, Oct 15					
Start Time (ET)	End Time (ET)				
800	900	Tutorial	HADES Hack-a-thon: Part 1	Oncology WG	FHIR-OMOP: Terminologies Subgroup, Part 1
900	1000				FHIR-OMOP: Increasing the Value of Data Through a Rich Set of Attributes
1000	1100		Lunch	Lunch	Lunch
1100	1200				
1200	1300				
1300	1400		Methods Research (PLE/PLP)	Oncology WG (continued)	FHIR-OMOP: Data Model Harmonization Subgroup
1400	1500			Natural Language Processing	FHIR-OMOP: Oncology Subgroup
1500	1600				FHIR-OMOP: Terminologies Subgroup, Part 2
1600	1700				
1700	1800				
1800	1900				
Sunday, Oct 16					
800	900	All-Hands Workgroup Meeting			
900	1000				
1000	1100				
1100	1200				
1200	1300	Lunch		Lunch	Lunch
1300	1400	Phenotype Evaluation	HADES Hack-a-thon: Part 2	Education	CDM and Data Quality
1400	1500			Health Equity	
1500	1600				
1600	1700				

[www.ohdsi.org/ohdsi2022-workgroup-activities](http://www.ohdsi.org/ohdsi2022-workgroup-activities)



# An Introductory Journey From Data To Evidence

OHDSI2022 Tutorial • Saturday, Oct. 15 • Bethesda, Md.



**The OHDSI Journey:  
Where Are We Going?**

**Patrick Ryan**



**OMOP Common Data  
Model and Vocabulary**

**Clair Blacketer**



**ETL – A Source Database  
Into OMOP CDM**

**Melanie Philofsky**



**Creating Cohort  
Definitions**

**Asieh Golozar**



**Phenotype Evaluations**

**Gowtham Rao**



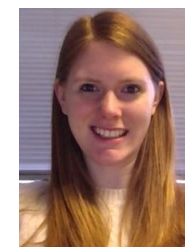
**Characterization**

**Kristin Kostka**



**Estimation**

**Martijn Schuemie**



**Prediction**

**Jenna Reps**



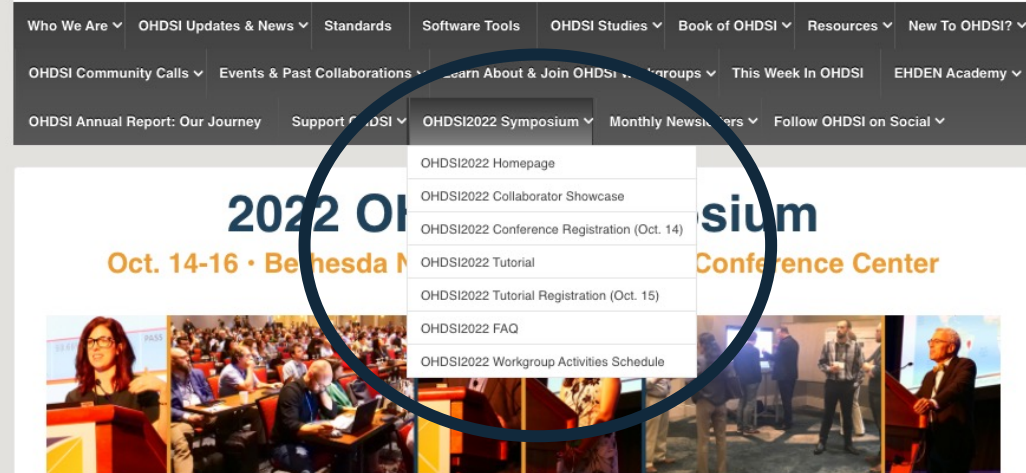
**The OHDSI Journey: Where  
Do We Go From Here?**

**George Hripcsak**





# 2022 OHDSI Symposium



We are thrilled to announce that registration for the 2022 OHDSI Symposium, which will be held Oct. 14-16 at the Bethesda North Marriott Hotel & Conference Center, is now open!

It is so exciting to bring our community back together this fall. [Our collaborator showcase will return](#); please click the link to see how you can take part in our poster presentations, software demos and lightning talks. The full agenda for our conference is still being developed, so please continue to check the OHDSI website ([www.ohdsi.org](http://www.ohdsi.org)) and our social platforms for updates as we plan for the 2022 Symposium.

The main conference will be held Friday, Oct. 14. A full-day tutorial will be held Saturday, Oct. 15, while other community activities will be held both Oct. 15 and Oct. 16.

## Symposium Registration Details

### Friday, Oct. 14 – Main Conference

**Registration Fee:** \$500\*

\* this is an open and inclusive event; if the registration fee represents a burden to you, please contact [symposium@ohdsi.org](mailto:symposium@ohdsi.org).

Should you need to make changes or cancel your registration ticket, please follow the instructions you will receive on your Eventbrite confirmation upon registration completion. Please note that tickets can be refunded up until 7 days prior to the event; Eventbrite fees are not refundable.

[www.ohdsi.org/ohdsi2022symposium](http://www.ohdsi.org/ohdsi2022symposium)





Penn Medicine



# OHDSI: Applying the Decentralized Generalized Linear Mixed Effects Model (dGEM) for Hospital Profiling of COVID-19 Mortality Data across OHDSI Network

Lead: Jessie Tong<sup>1</sup>, Jenna Reps<sup>2</sup>, Yong Chen<sup>1</sup>

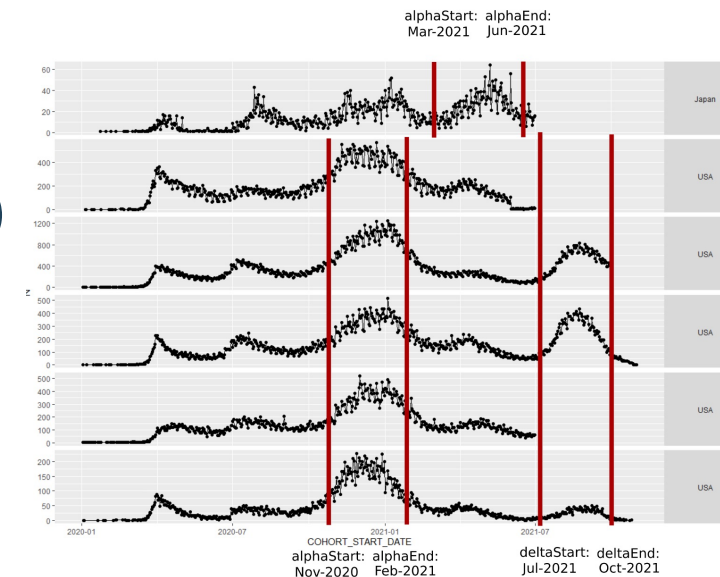
<sup>1</sup> Department of Biostatistics, Epidemiology and Informatics (DBEI), the Perelman School of Medicine, University of Pennsylvania

<sup>2</sup> Janssen R&D

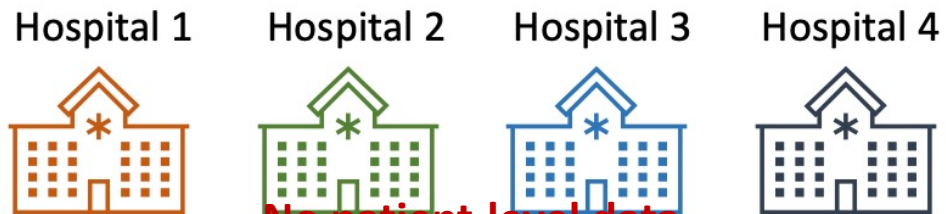
May 2022



- Aim:
  - A distributed network analyses of hospital profiling on the COVID-19 mortality rate within the OHDSI network
- Method:
  - Decentralized Generalized Linear Mixed Effects Model (dGEM)
    - Privacy-preserving (patient-level and hospital-level), communication-efficient, heterogeneity-aware, hospital-level calibration
- Study cohort details:
  - Two time periods for the hospital profiling:
    - i) during the Alpha wave (in the USA approximately Nov 2020-Feb 2021)
    - ii) during the Delta wave (in the USA approximately Jul 2021-Oct 2021)
  - Outcome of interest:
    - COVID-19 Mortality
  - Measure for hospital profiling:
    - Standardized COVID-19 Mortality Rate
  - Variables:
    - Age, Charlson comorbidity, gender, history of cancer/chronic obstructive pulmonary disease/heart disease/hypertension/hyperlipidemia/kidney disease/obesity/diabetes, number of visits recorded in visit table in 2019
- Target journal and submission timeline:
  - Nature Methods, July 2022







No patient-level data  
Only aggregated data



### Coordinating Center

True ID	Working ID	Aggregated Data (AD)
Hospital 1	Z58	
Hospital 2	A74	
Hospital 3	F9Q	
Hospital 4	D01	

True ID will never be shared

### Input:

- Working ID
- Aggregated Data (AD)



### dGEM Algorithm



### Output:

- Hospital performance measures
- Strategies for improving hospital ranking



# APAC Community Calls

Date	Topic
May 5	Cohort diagnostic tool
May 19	Mini-tutorials #1
June 2	Mini-tutorials #2
June 16	Chapter Mid-year Updates
June 30	EU Symposium Recap
July 14	APAC Study Quarterly Updates Part I
July 28	APAC Study Quarterly Updates Part II

[ohdsi.org/apac](https://ohdsi.org/apac)





# 2022 APAC Symposium

The main poster for the symposium features a vibrant aerial view of Taipei, Taiwan, with the iconic Taipei 101 skyscraper as the focal point. A semi-transparent light blue rectangle is centered over the image, containing the event details in a serif font. The OHDSI logo is positioned in the top right corner of the poster, and a larger version of the OHDSI TAIWAN logo is centered below the text. On the left side of the poster, there is a vertical strip showing a close-up of a pen, a small globe, and a hand shaking, symbolizing global collaboration.

**The 3<sup>rd</sup> OHDSI APAC Symposium**  
**Taipei Taiwan (onsite and virtual)**  
**Nov 12-13, 2022**


**OHDSI**  
**TAIWAN**

[ohdsi.org/apac](https://ohdsi.org/apac)




# Opening at Oxford

**Dani Prieto-Alhambra's** team at Oxford is recruiting a Database Programmer to join the team. This position will contribute to the standardization and curation of large real world data from the UK and collaborate with the OHDSI, EHDEN and OPTIMA Oncology teams.

**UNIVERSITY OF OXFORD**  
UK date and time: 19-April-2022 15:10

**Applicant Options**

- New Search
- Login
- Job Details
- Help
- Terms of Use & Privacy Policy



**Job Details**  
**Database Programmer**  
**NDORMS, Botnar Research Centre, Windmill Road, Oxford, OX3 7LD**

The Big Health Data Research group and the Pharmaco- and Device epidemiology research group, led by Prof Prieto-Alhambra, require an enthusiastic and skilled computer scientist or software engineer with strong programming experience, an interest in Relational Database Management Systems (RDBMSs) and a proven capacity to design and deliver database programming software. This position would ideally suit an individual who wishes to pursue a career in the growing field of health and/or biomedical informatics using standardised models for the management of real-world clinical data. We are part of the Observational Health Data Sciences and Informatics (OHDSI) community, which utilises the OMOP Common Data Model (CDM) to standardise medical data coming from different sources. The post will be based at the Botnar Research Centre, Windmill Road, Oxford, UK.

In the role you will develop new database applications for big clinical data to meet project requirements and deadlines, carry out software improvement, extension, integration and further development on existing code and develop code to validate, test, document and maintain database applications. You will also represent the project, team, and the University in collaboration meetings, conferences and at external meetings and work collaboratively with colleagues in other research groups, other departments, and partner institutions around the world as required by the projects

A degree in computer science, software engineering, health informatics or an equivalent combination of training and professional experience, proven understanding and experience in one or more RDBMSs and SQL dialects (e.g. PostgreSQL, MySQL) and excellent skills in at least one high level programming language (e.g. Python, C++, C#, etc.) are essential. You will be a good team player and have the capacity to work independently, as well as the ability to prioritize workload when working on multiple projects and meet deadlines and capacity to communicate technical and non-technical topics effectively in writing and verbally with colleagues in any related discipline. A Master or PhD (doctorate) degree in computer science, software engineering, medical informatics or equivalent and experience working in a research environment are desirable.

This is a full-time fixed-term appointment for 2 years (in the first instance).

A lower grade offer may be made (Grade 6: £29,176 - £34,804 p.a.) with commensurate reduction in responsibilities (and amendment in job title to Database Officer) if a suitable candidate cannot be found to fill the Grade 7 position.

The closing date for this position is **12 noon on Monday 23 May 2022**. You will be required to upload a CV and supporting statement as part of your online application.

Contact Person :	HR Assistant	Vacancy ID :	157544
Contact Phone :		Closing Date & Time :	23-May-2022 12:00
Pay Scale :	STANDARD GRADE 7	Contact Email :	<a href="mailto:hr@ndorms.ox.ac.uk">hr@ndorms.ox.ac.uk</a>
Salary (£) :	£33,309 - £40,927		

Click on the link(s) below to view documents	Filesize
<a href="#">157544_database_programmer_JD_final.pdf</a>	379.5

[Return to Search Results](#)[Apply Now](#)

**Deadline: May 23, 2022**





# Opening at Erasmus

**Peter Rijnbeek** and his team at Erasmus Medical Center is recruiting a R programmer for Health Data Science.

This position will be responsible for designing, developing, documenting, and maintaining R code that will be executed against health data that is standardized to the OMOP Common Data Model.

## R programmer for Health Data Science

Published	Deadline	Location
14 Apr	tomorrow	Rotterdam

### JOB DESCRIPTION

The [Health Data Science group](#) at the Department of Medical Informatics is looking for multiple experienced R programmers to develop open source analytics.

You will be responsible for designing, developing, documenting, and maintaining R code that will be executed against health data that is standardized to the OMOP Common Data Model (OMOP-CDM). This data model is maintained by the [Observational Health Data Sciences and Informatics \(OHDSI\)](#) initiative. The Department is leading the [European Health Data and Evidence Network \(EHDEN\)](#) project in which a large data network is created with data sources that are mapped to this data model. Your work will enable the use of health data at an unprecedented scale in Europe and will facilitate the execution of impactful studies to improve patient care. We recommend applicants to review the [Health Analytics Data-to-Evidence Suite \(HADES\)](#) developed by OHDSI to get an understanding of the growing set of R packages.

> **Apply now**  
(one day remaining)



### Specifications

- IT
- Health
- max. 36 hours per week
- €3125—€4284 per month
- Higher professional education
- #15.21.22.TG-P926466-1

### Employer



Erasmus MC (University Medical Center Rotterdam)

[Learn more about this employer](#)

### Location

's-Gravendijkwal 230, 3015 CE, Rotterdam



# Opening at the National Eye Institute

As mentioned by **Sally Baxter** and **Kerry Goetz** on in their recent Eye Care & Vision Research WG update, the National Eye Institute is looking for a DATA Scholar to develop a strategy and lead community consensus building to improve ocular health care through data standardization.



**Institute or Center:** National Eye Institute (NEI)

**Project:** Vision for Improving Interoperability for Eye Health Data

**Skills sought:**

- Familiarity with standard health care terminologies, including SNOMED and LOINC and common data models (e.g. Observational Medical Outcomes Partnership (OMOP))
- Experience working with human research data, knowledge of data standards, and best practices
- Experience with data science techniques for handling large data sets and performing quality evaluation
- Demonstrated leadership, management and communication skills, and proven ability to build trust and form alliances with diverse stakeholders across different scientific fields, such as health disparities, big data analytics, statistics, and mathematics

**About the position:** The NEI Office of Data Science & Health Informatics (ODSHI) seeks a DATA Scholar to develop a strategy and lead community consensus building to improve ocular health care through data standardization. The scholar will:

- Build on community expertise of the Observational Health Data Sciences and Informatics (OHDSI) OMOP CDM<sup>®</sup> to advance standard representation of ocular concepts.
- Identify the need for new standards or modifications to existing ones for improved, computable data representation.
- Create a publicly available central mapping resource that would allow transformation of vision data in disparate databases to the OMOP CDM to allow cross-cutting research using these multiple data sources.



# Opening at Emory University

**Daniel Smith** shared a recent opening at Emory University in Atlanta for an Informatics Analyst; this position will provide OMOP support for Winship Data and Winship Discovery projects.



EMORY UNIVERSITY  
**Careers**

ALL EMORY JOBS

FACULTY POSITIONS

STAFF JOBS

TEMPORARY JOBS

INTERNAL STAFF JOBS

GE

## Informatics Analyst II | Office of IT - Winship Data / Winship Discovery

Job Number 85590

Job Type Regular Full-Time

Division Office Information Technology

Department OIT: IT Data Mgmt & Solutions

This position may involve the following Health and Safety issues: Not Applicable

Job Category Information Technology

Atlanta

Emory Campus-Clifton Corridor

### Discover Your Career at Emory University

Emory University is a leading research university that fosters excellence and attracts world-class talent to innovate today and prepare leaders for the future. We welcome candidates who can contribute to the diversity and excellence of our academic community.

### Description

The Office of IT's department of Data Management and Solutions is seeking an Informatics Analyst II to provide data management and data extraction services for Emory University's Winship Cancer Institution and will support projects for Winship Data and Winship Discovery. The analyst assists faculty by coordinating research data requests, defining program requirements and translating them to appropriate queries, integrating research data from multiple sources (OnCore, OpenSpecimen, and REDCap), and extracting/preparing the data in a format for use.

### JOB DESCRIPTION:

- Works as a positive team member of a project that may consist of Business Analysts, Project Managers, Information Architects, Data Analysts, and/or Database Administrators to deliver quality applications and components within scope, on time, and within budget.
- Participates in the evaluation of emerging technologies, developing proof-of-concepts, and promoting the usage of these emerging technologies.
- Meets with clients/stakeholders, and participates in design meetings with the client.
- Works directly with researchers to document, analyze, and translate their needs into technical designs and informatics solutions.
- Gathers user requirements and creates technical documentation.
- Applies biomedical informatics technical standards, methodologies, and principles to research-specific program needs, objectives, and outcomes.
- Assists in the development of business requirements for additional subject areas. Follows standard operational procedures and HIPAA regulations.
- Develops strategies for managing complex data sets through maintaining data standards and metadata. Develops complex reports from disparate systems and ensures their accuracy.
- Leads efforts to ensure that informatics systems support and advance the research objectives and mission of Emory University.
- Performs other duties as required.



# Internship at the Gates Medical Research Institute

**Cynthia Sung** posted a paid summer internship at the Bill & Melinda Gates Medical Research Institute on the OHDSI forums.

This candidate would transform Tuberculosis clinical trial data into the OMOP CDM.

## Bill & Melinda Gates Medical Research Institute Summer Internship - TBD



Apply

📍 Cambridge, MA

🕒 Full time

🕒 Posted 6 Days Ago

📄 B017325

*We are focused on results. Those that can be measured. And those measured in ways beyond numbers.*

*We see individuals, not issues. We are inspired by passion, and compassion for the wellbeing of people. Our methods are based on logic, driven by rigor, results, issues, and outcomes. Our innovation means trying new things, learning from our mistakes, and consistently refining our approach. Our strategies help us define our path to success, but our effectiveness is based in the aggregate power of our initiatives to impact holistic change.*

-Bill and Melinda Gates



# Where Are We Going?

**Any other announcements  
of upcoming work, events,  
deadlines, etc?**





# Three Stages of The Journey

**Where Have We Been?**

**Where Are We Now?**

**Where Are We Going?**







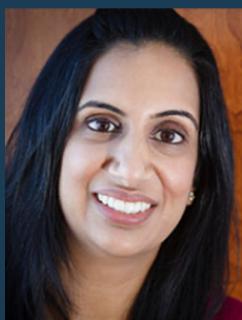
# May 10: Mother's Day Breakouts



## Data Standards Discussion

Recommended best practices for modeling pregnancy episodes and mother-child linkage

Jill Hardin and Mui Van Zandt



## Community Building Discussion

How can OHDSI support collaborator mothers to advance their personal and professional development?

Rupa Makadia and Sarah Seager



## Clinical Research Discussion

Clinical Research Opportunities: Brainstorm on maternal health

Alison Callahan, Ru-fong Cheng and Noémie Elhadad